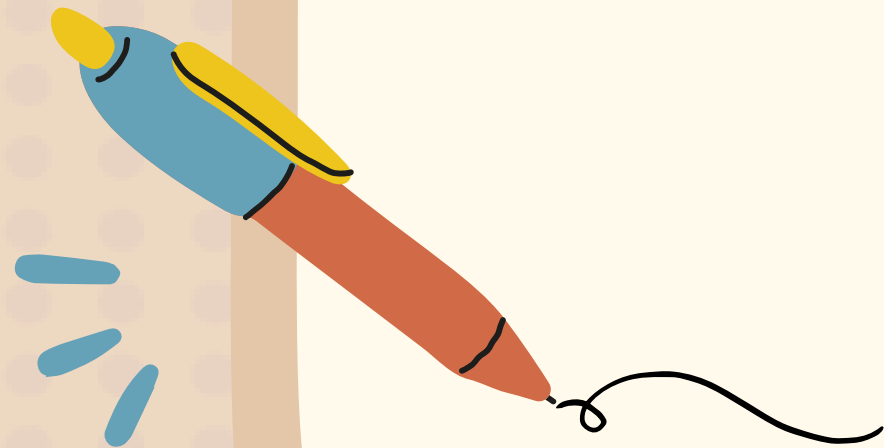


Puttisopon Elementary School

ENGLISH CLASS

With Teacher Waraporn

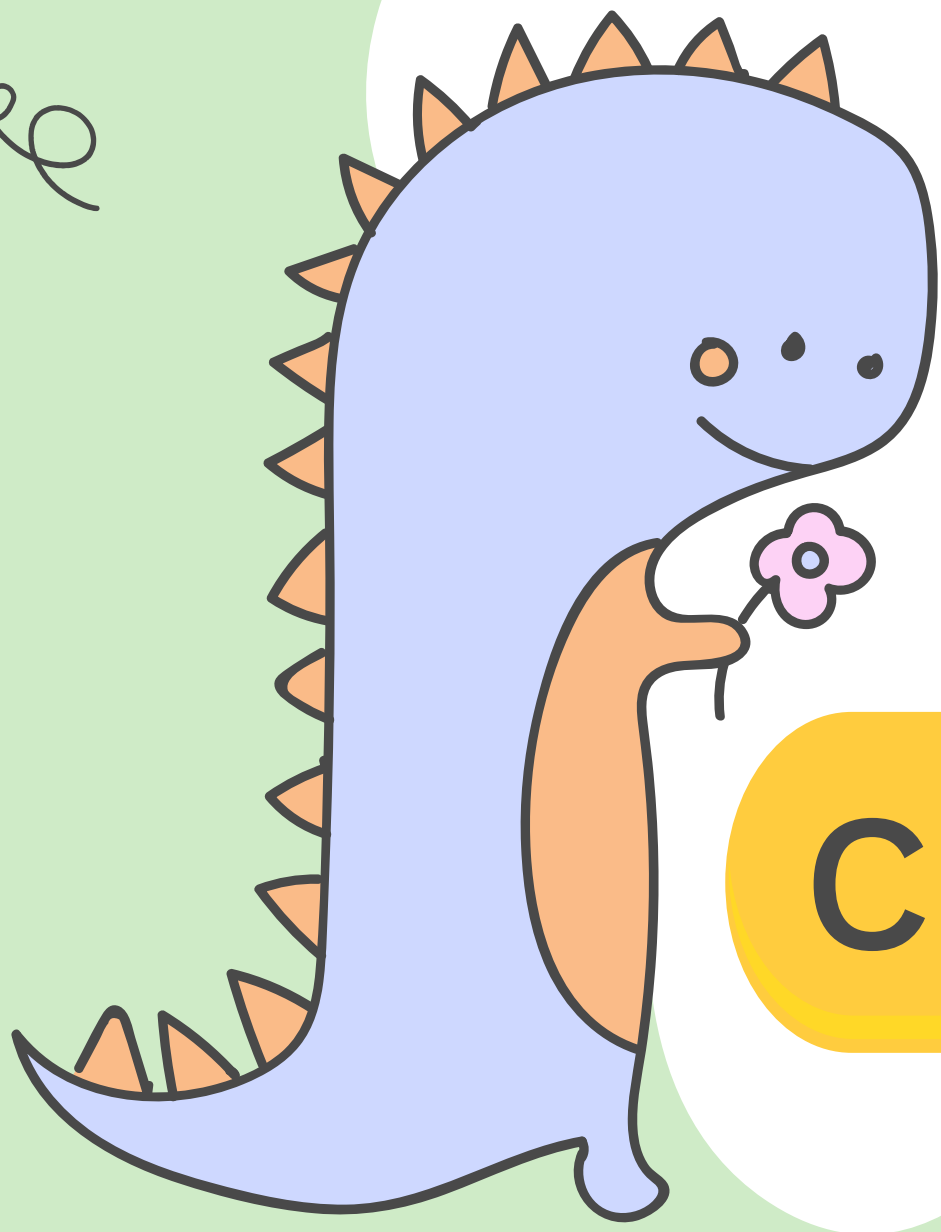


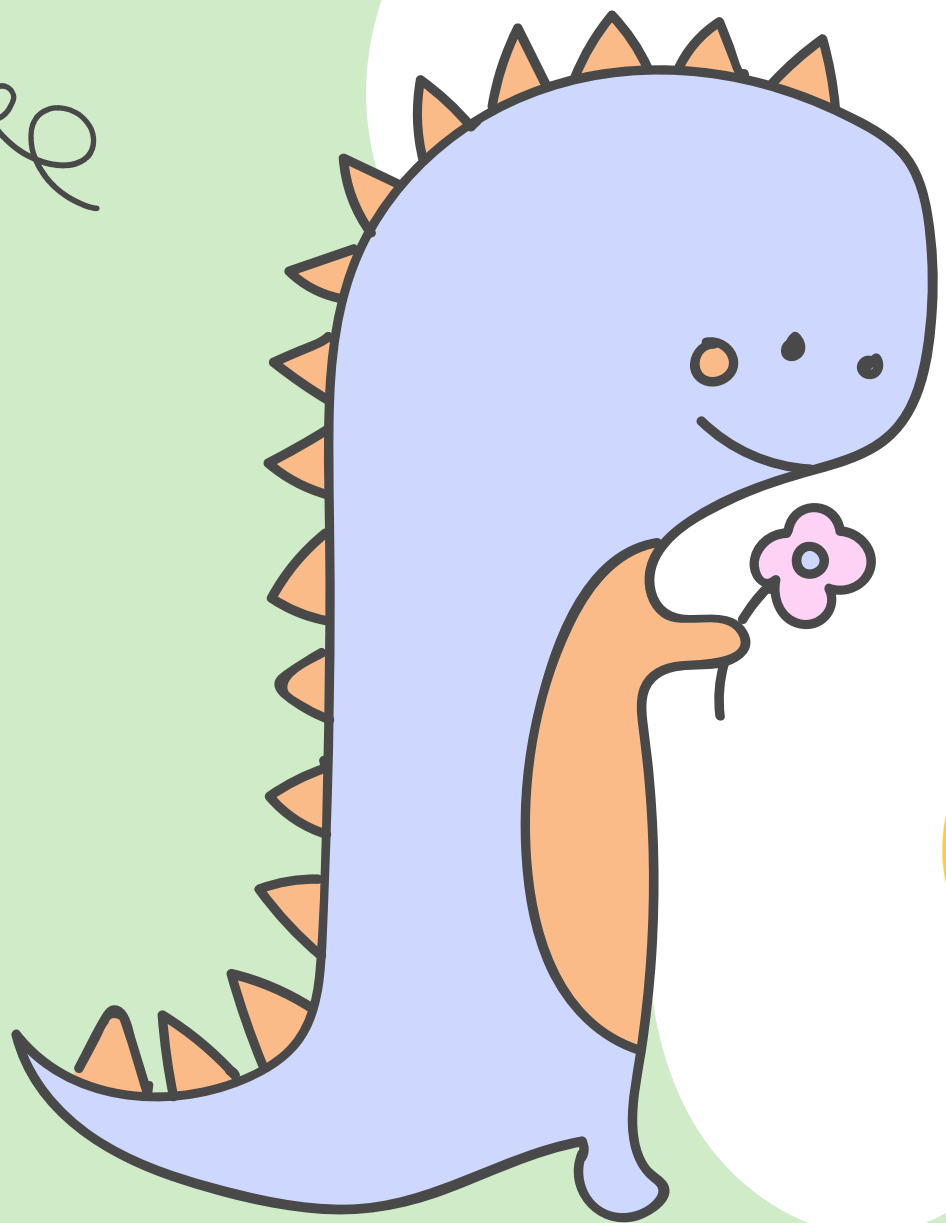


Job

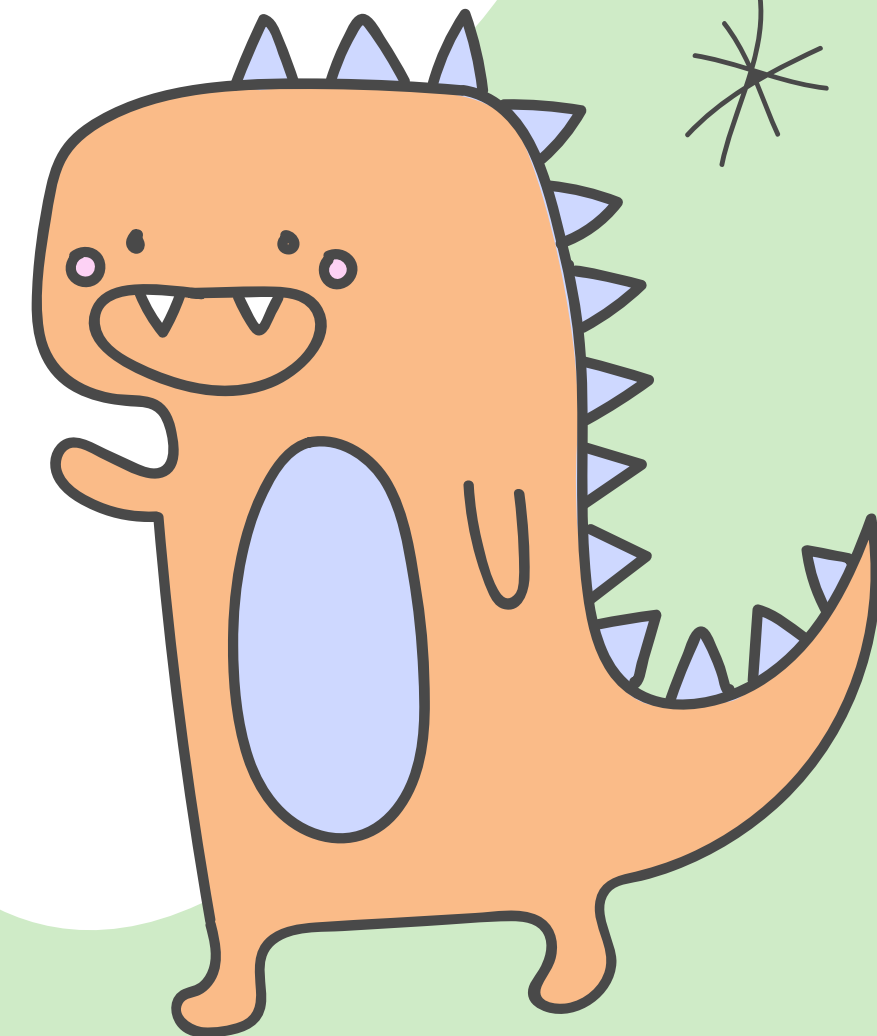
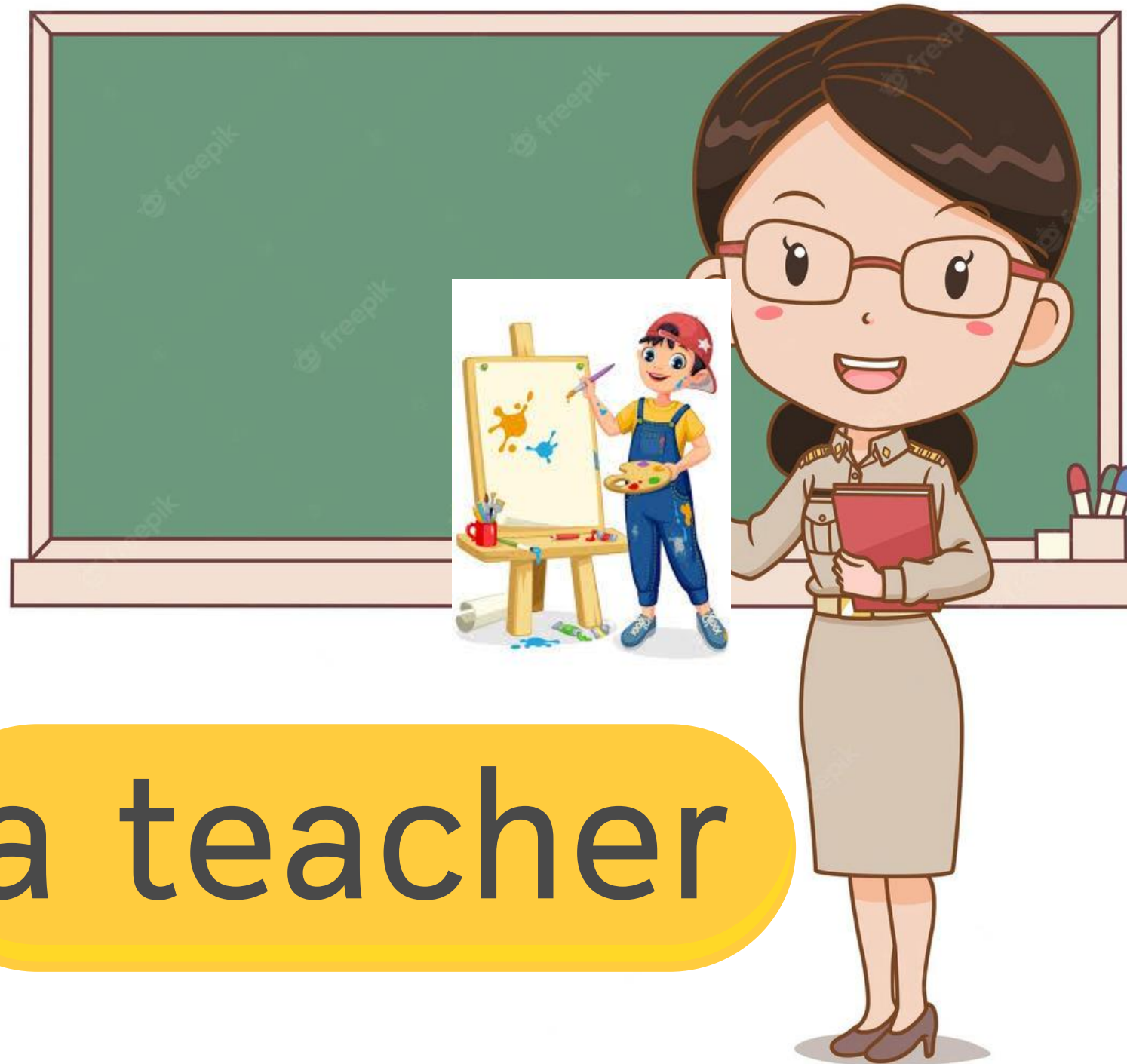
career

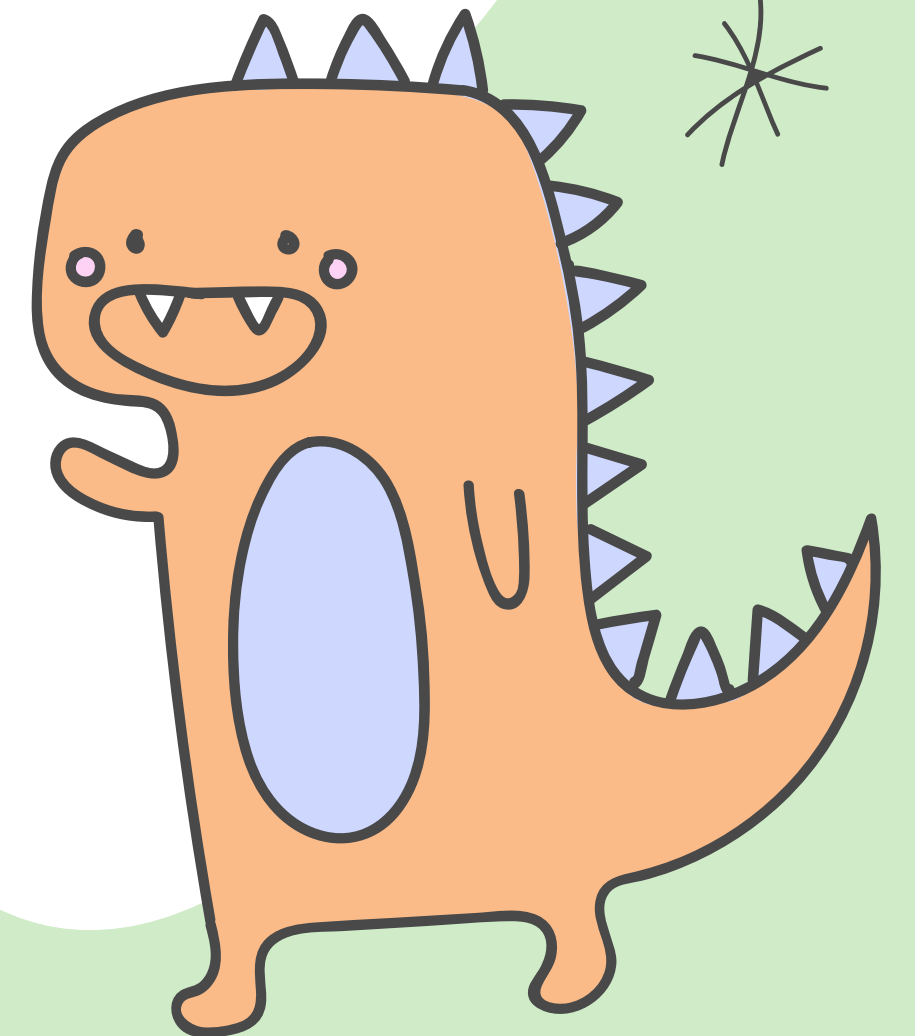
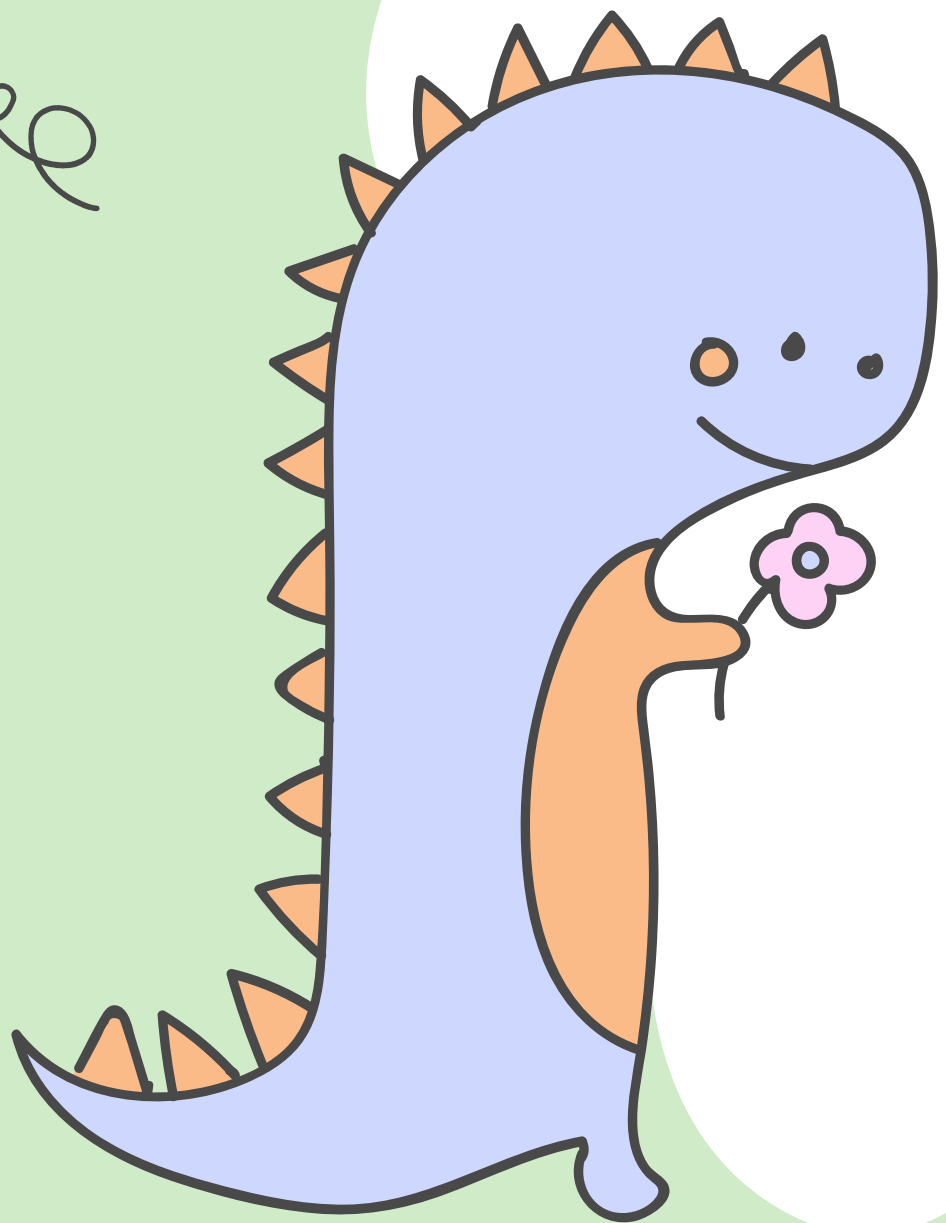
occupation



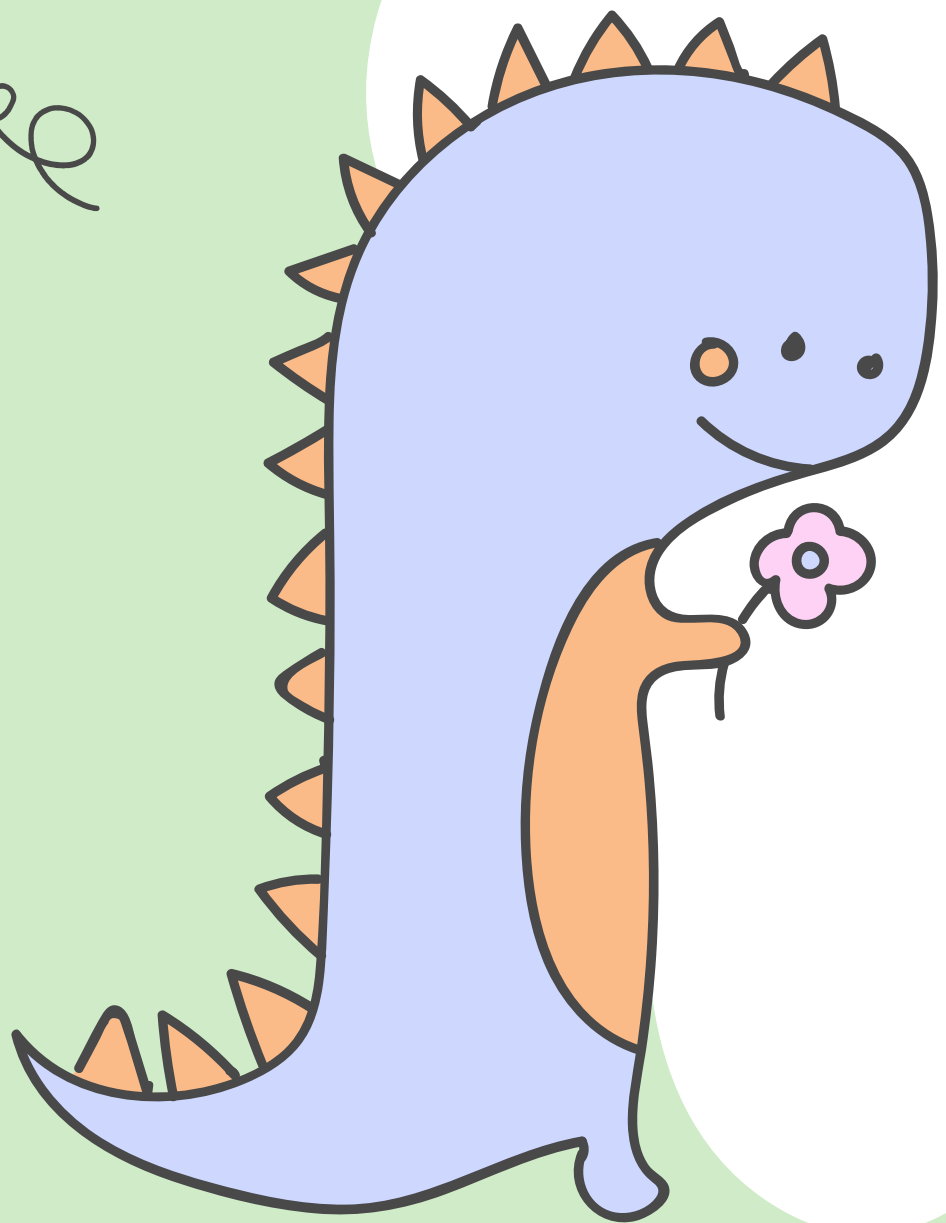


a teacher

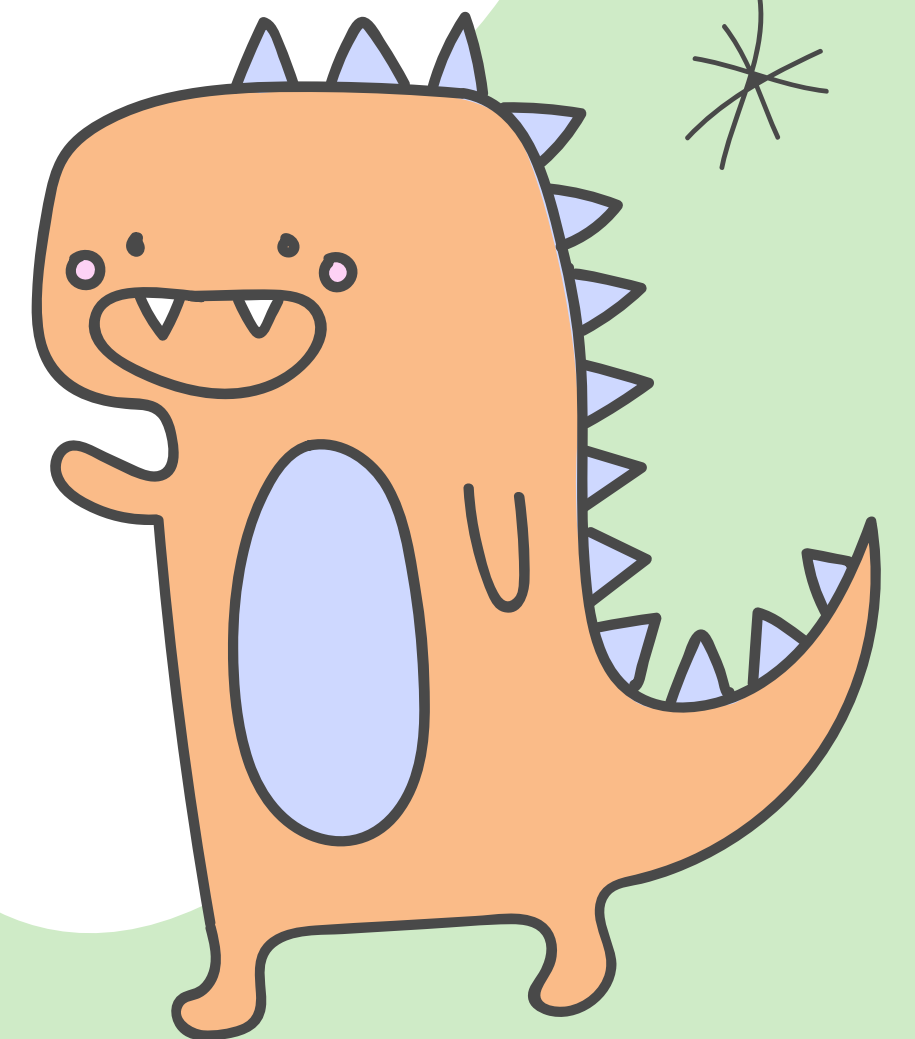


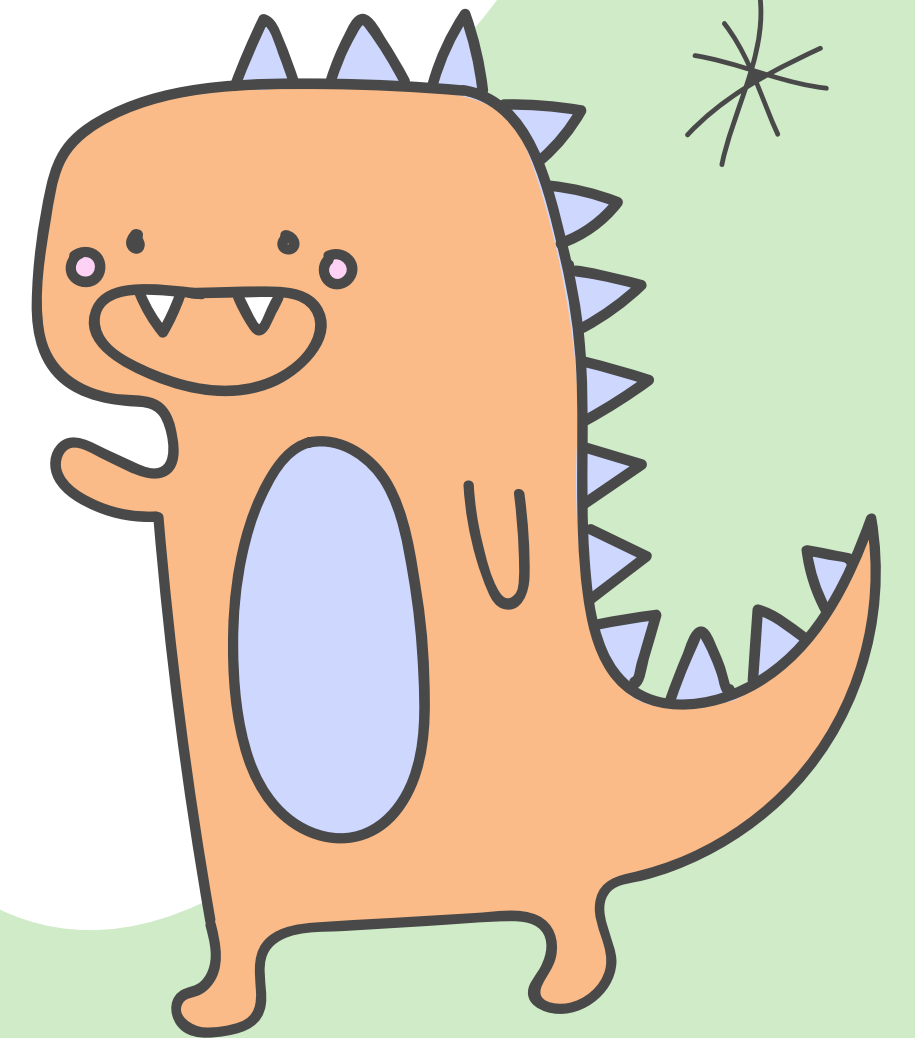
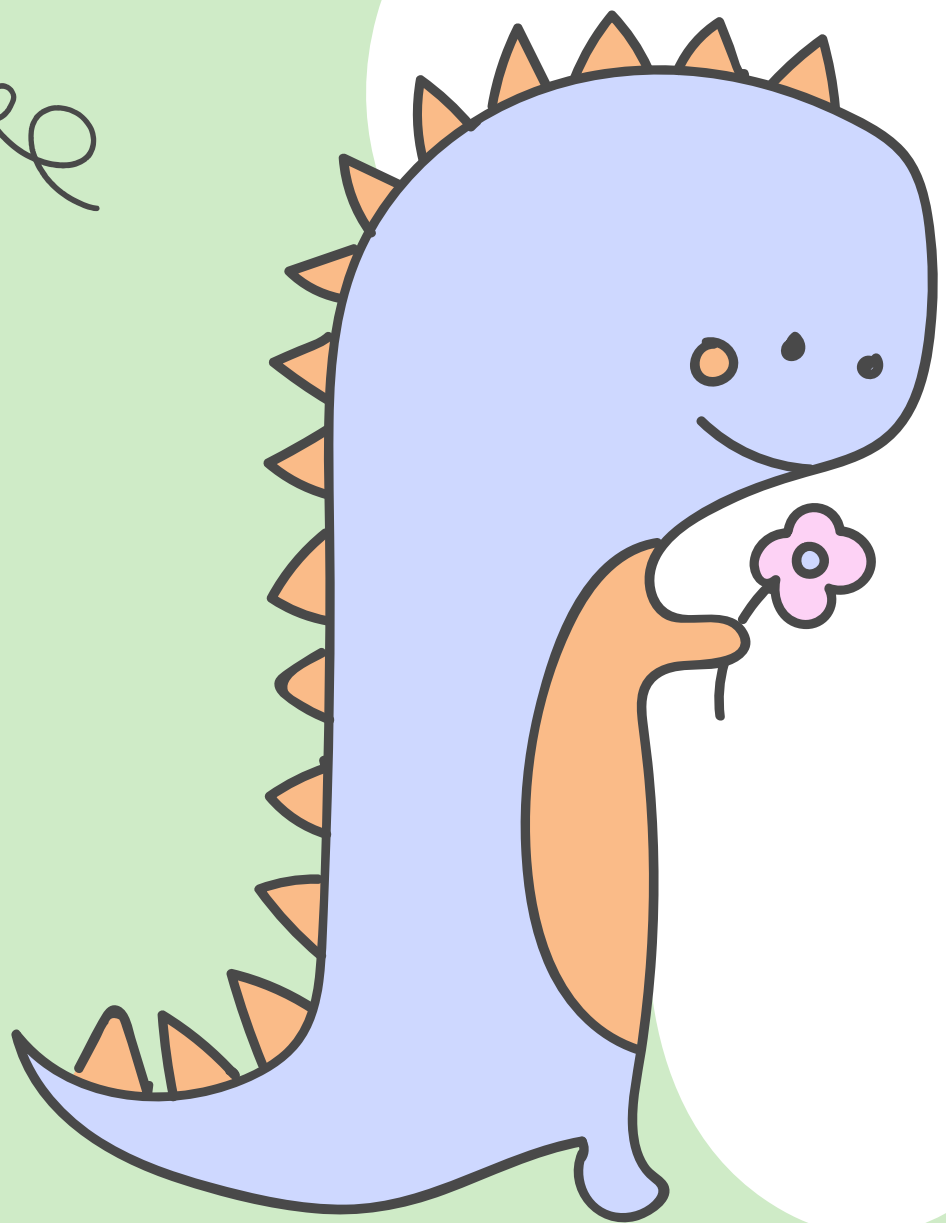


a taxi driver

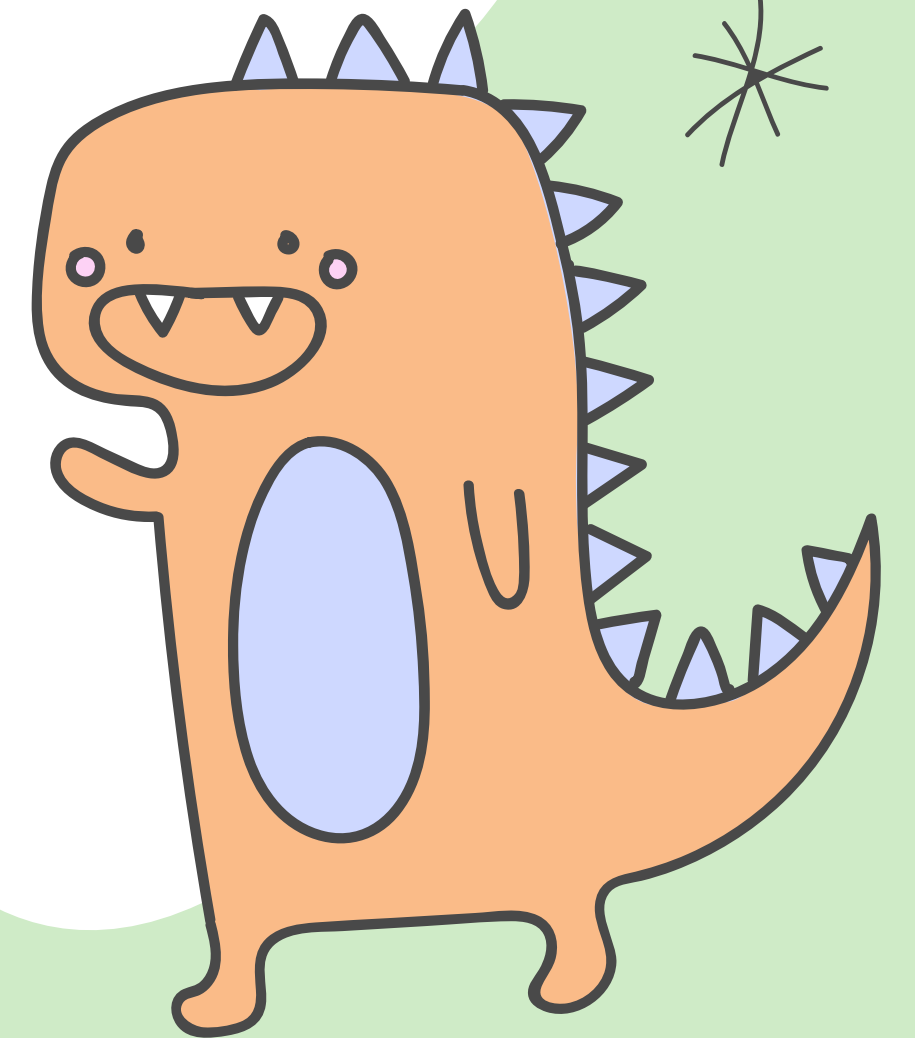
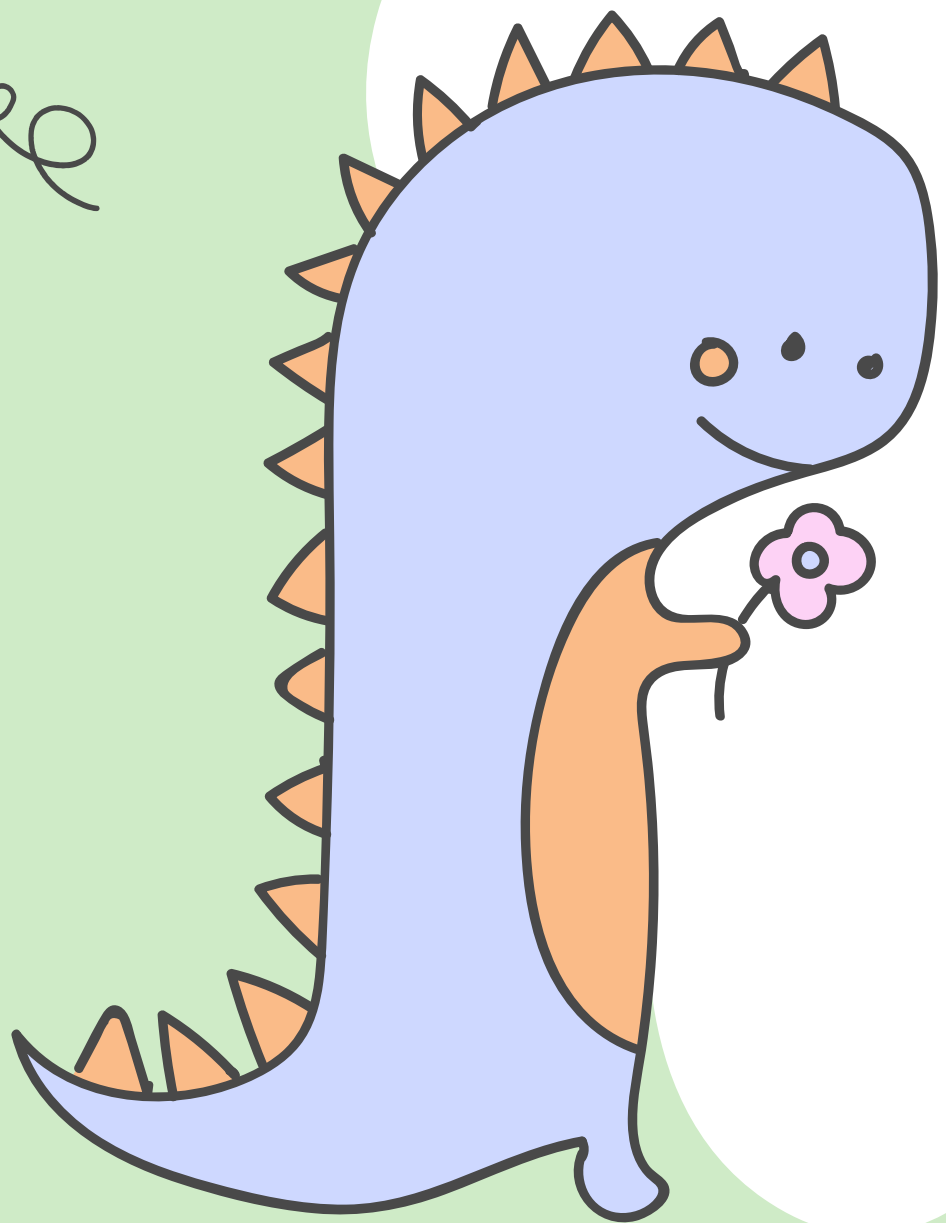


a farmer

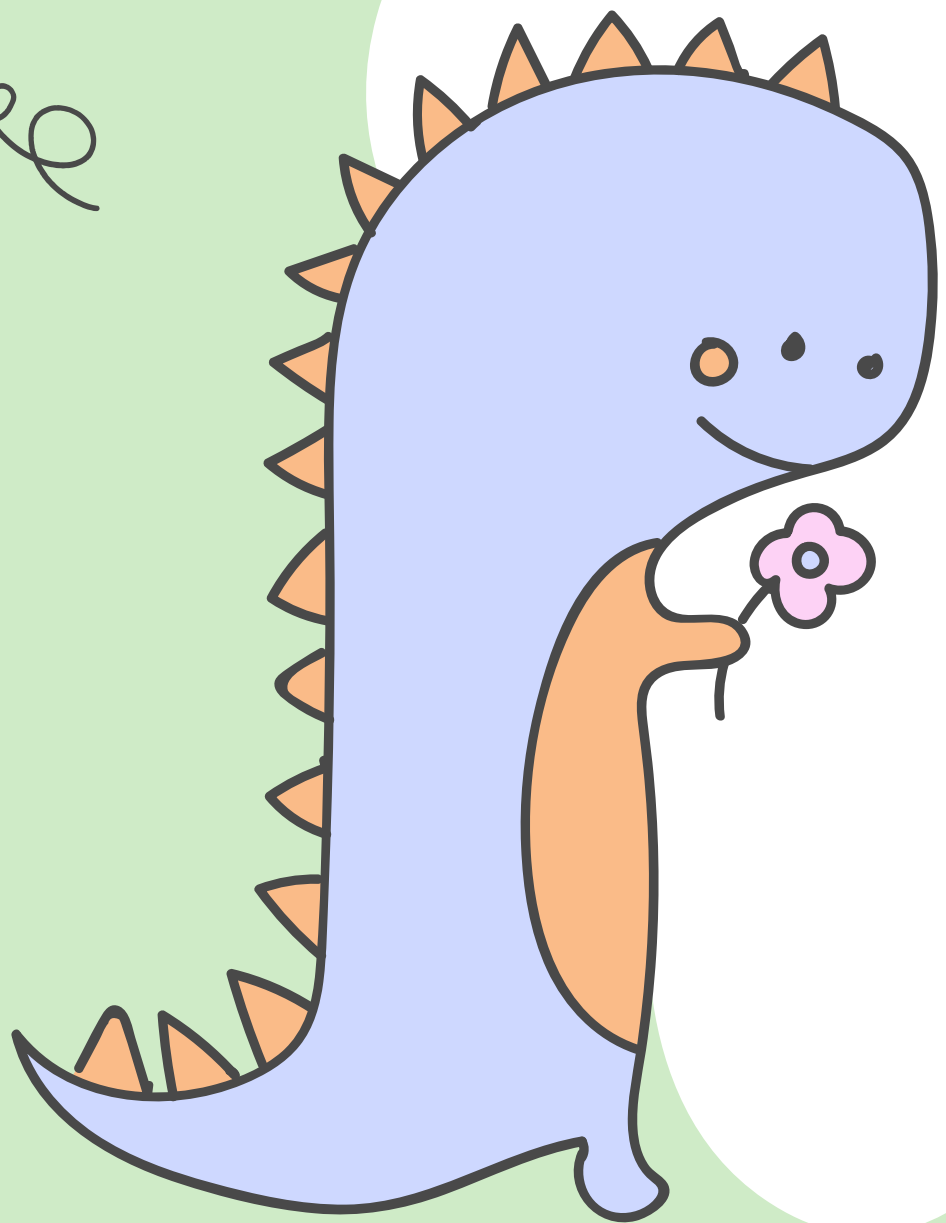




a nurse

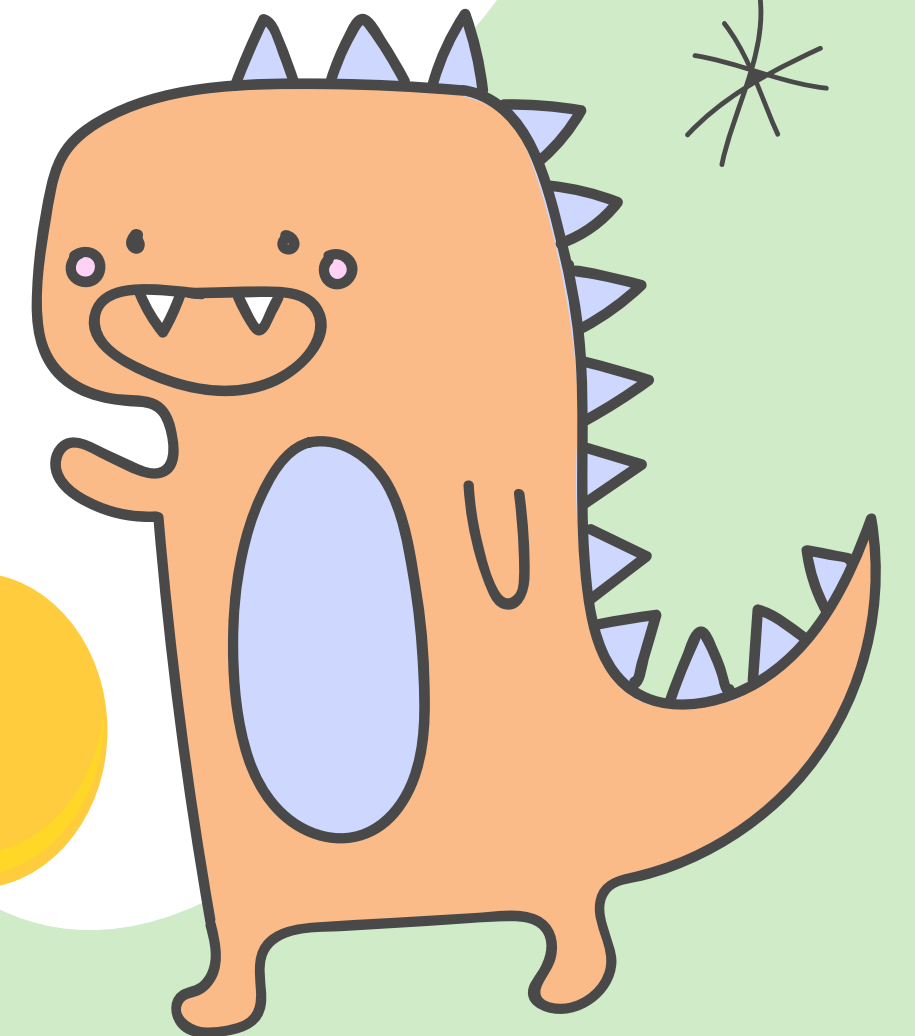


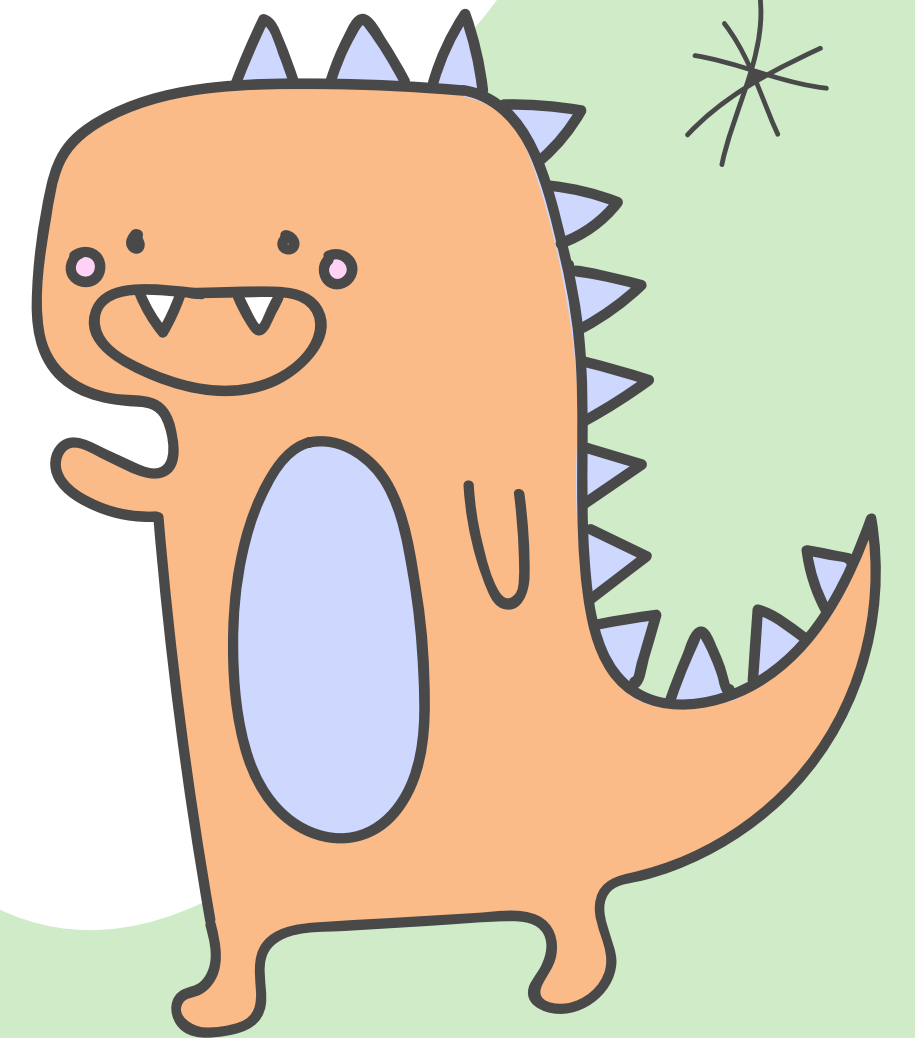
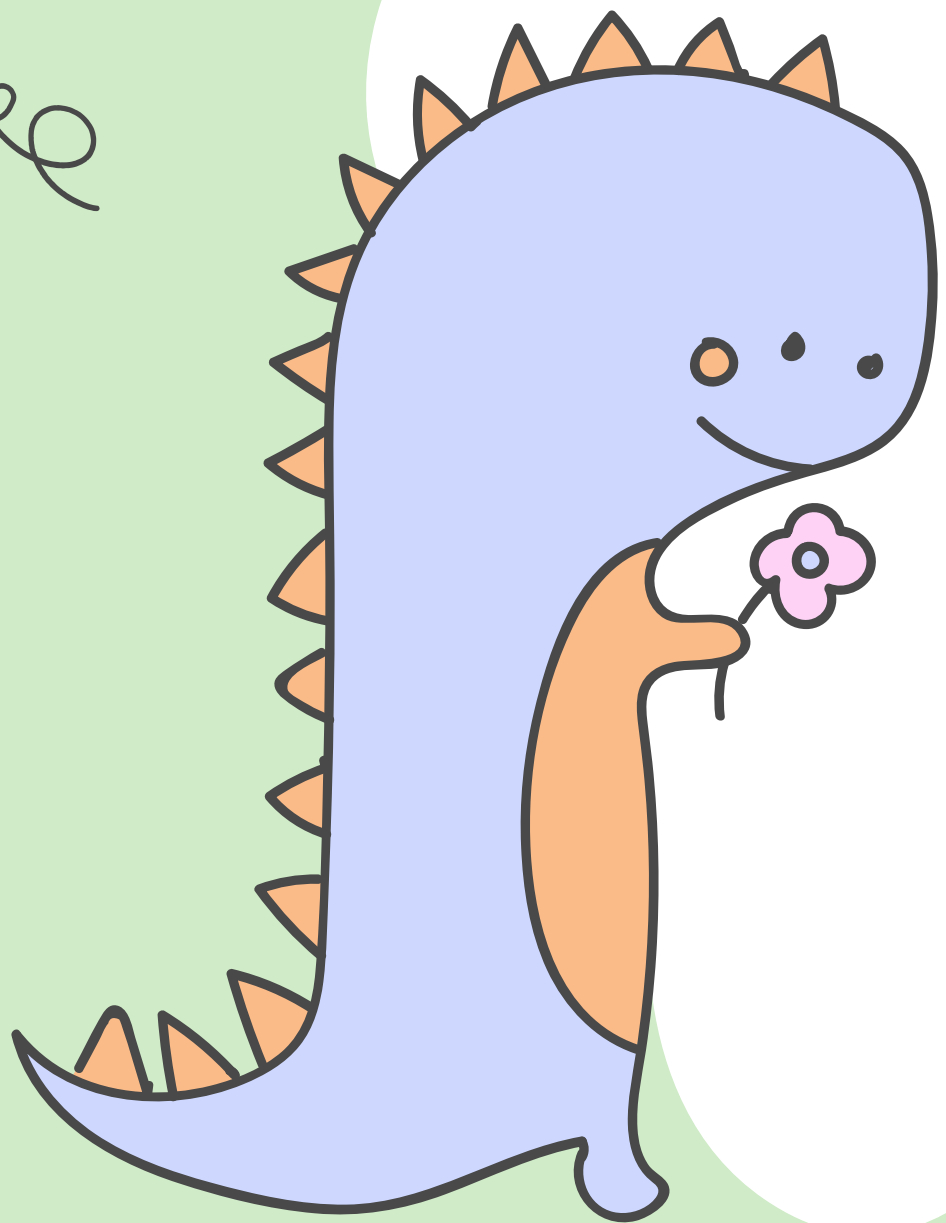
a baker



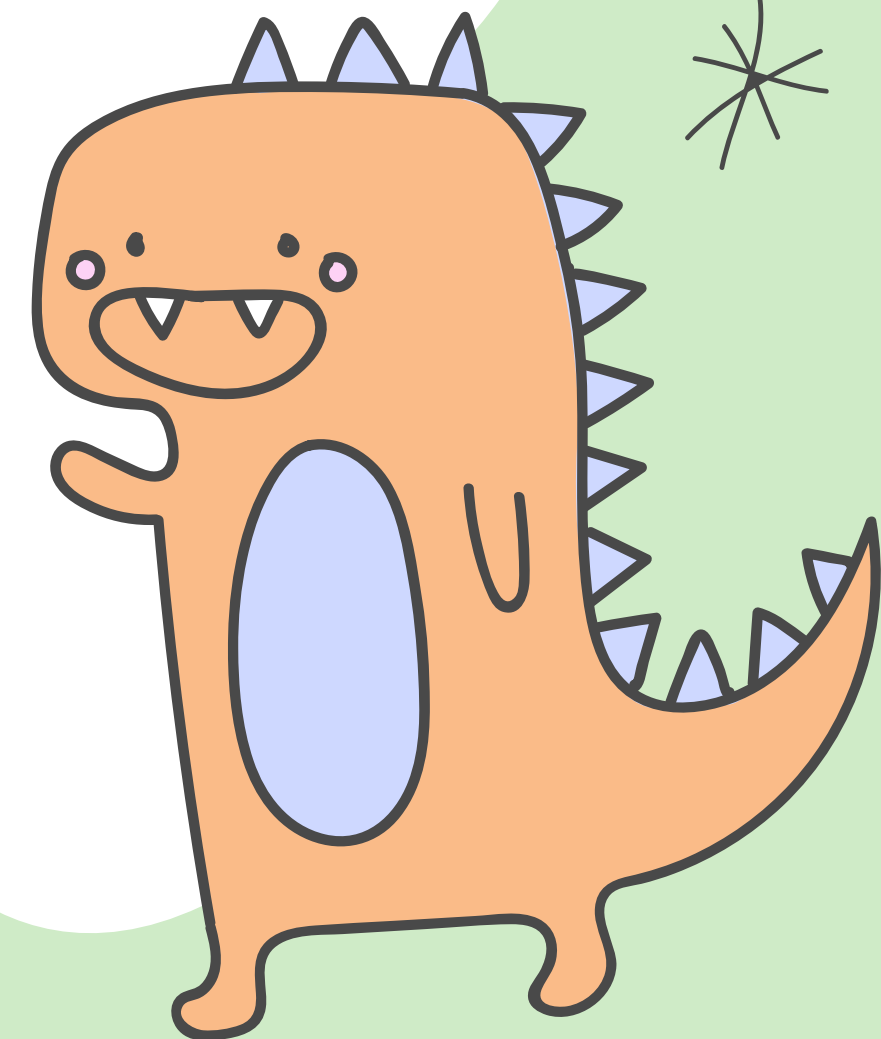
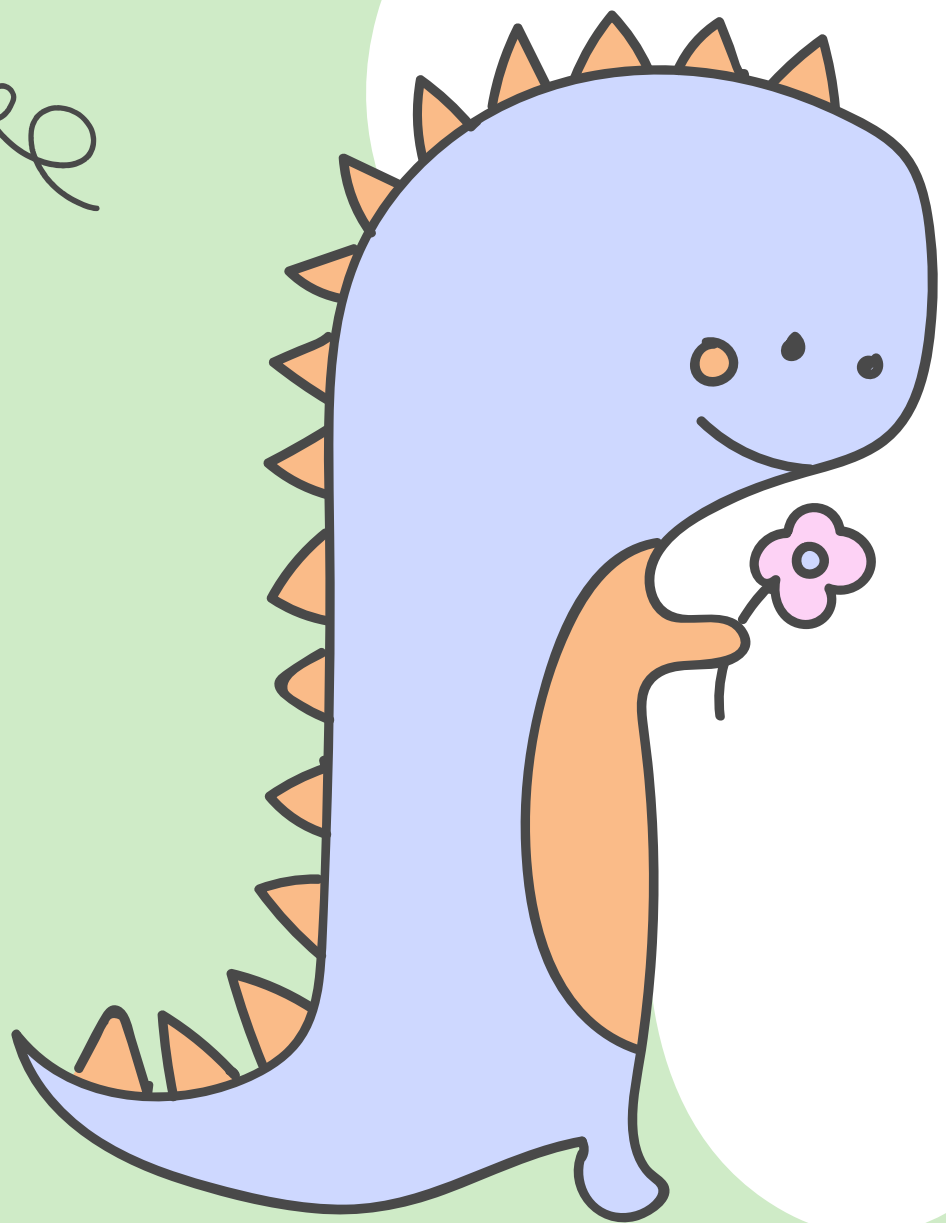
a cook

a chef





a doctor

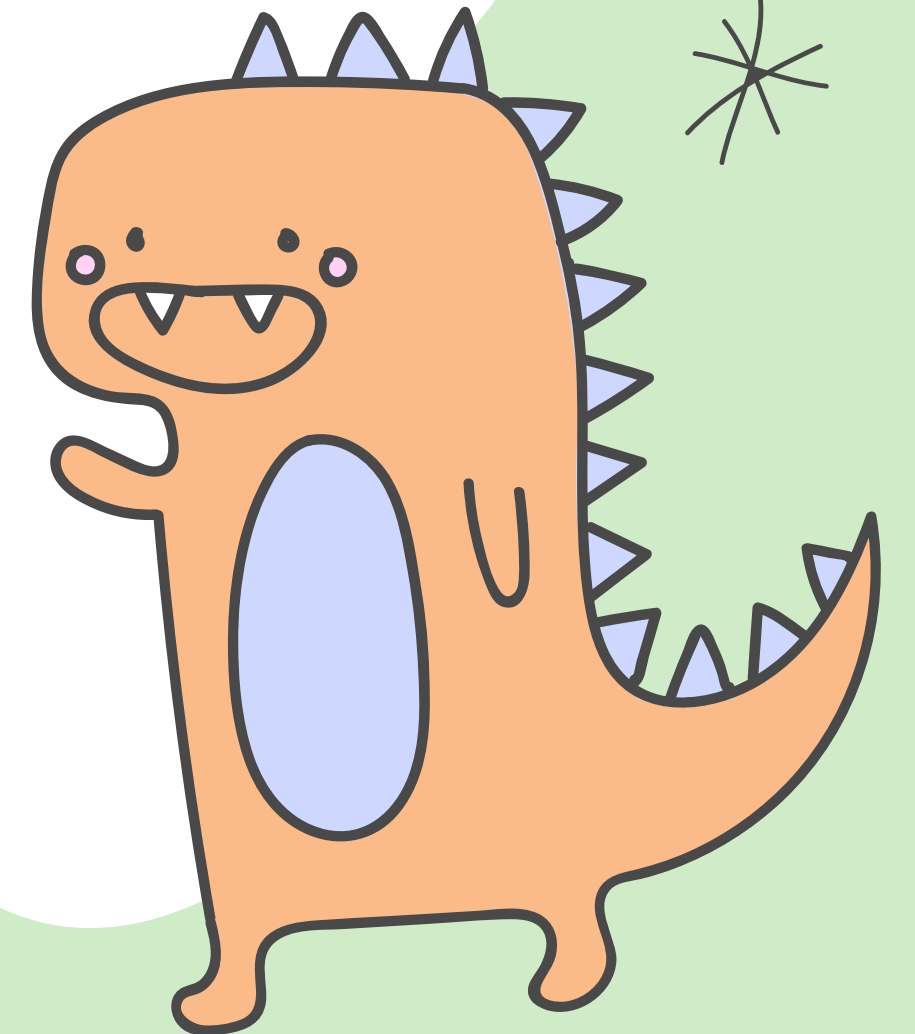
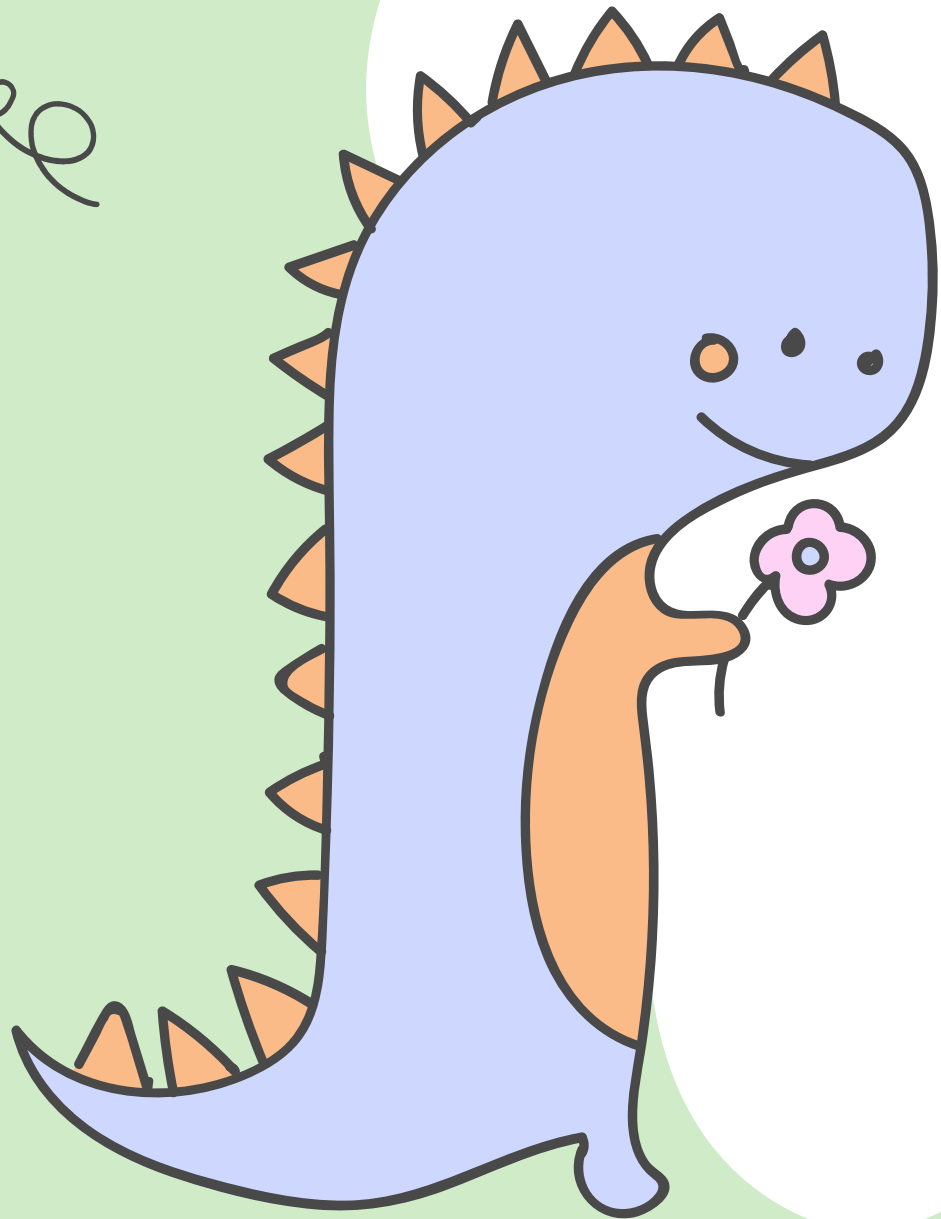


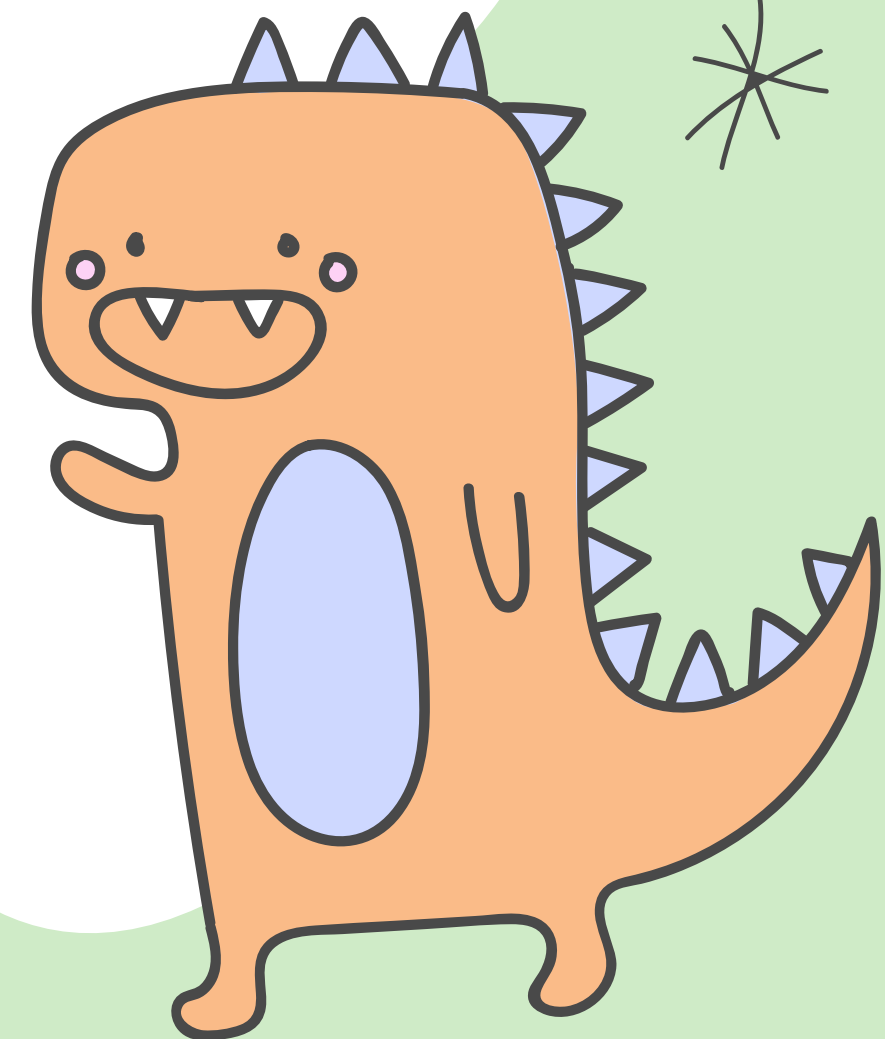
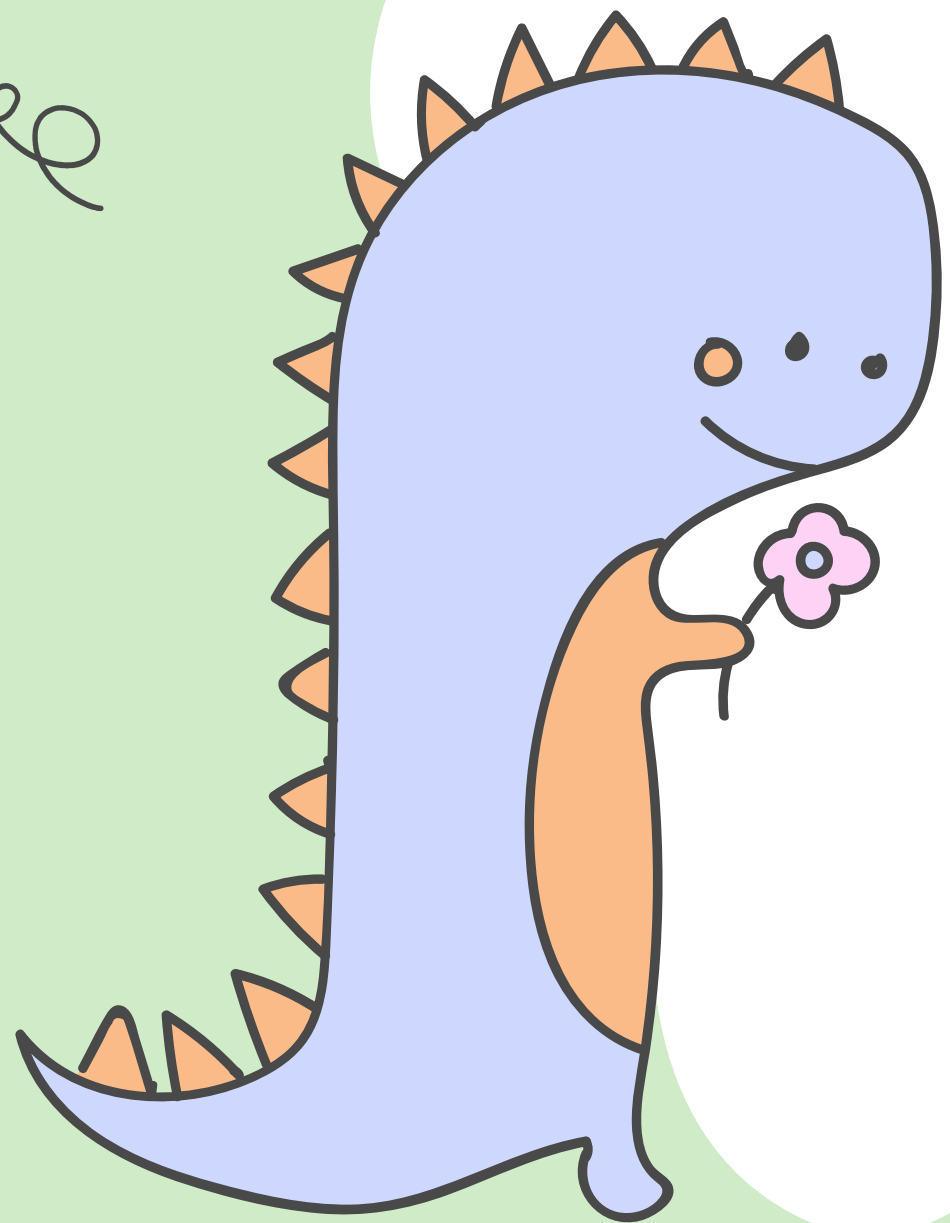
a fire fighter



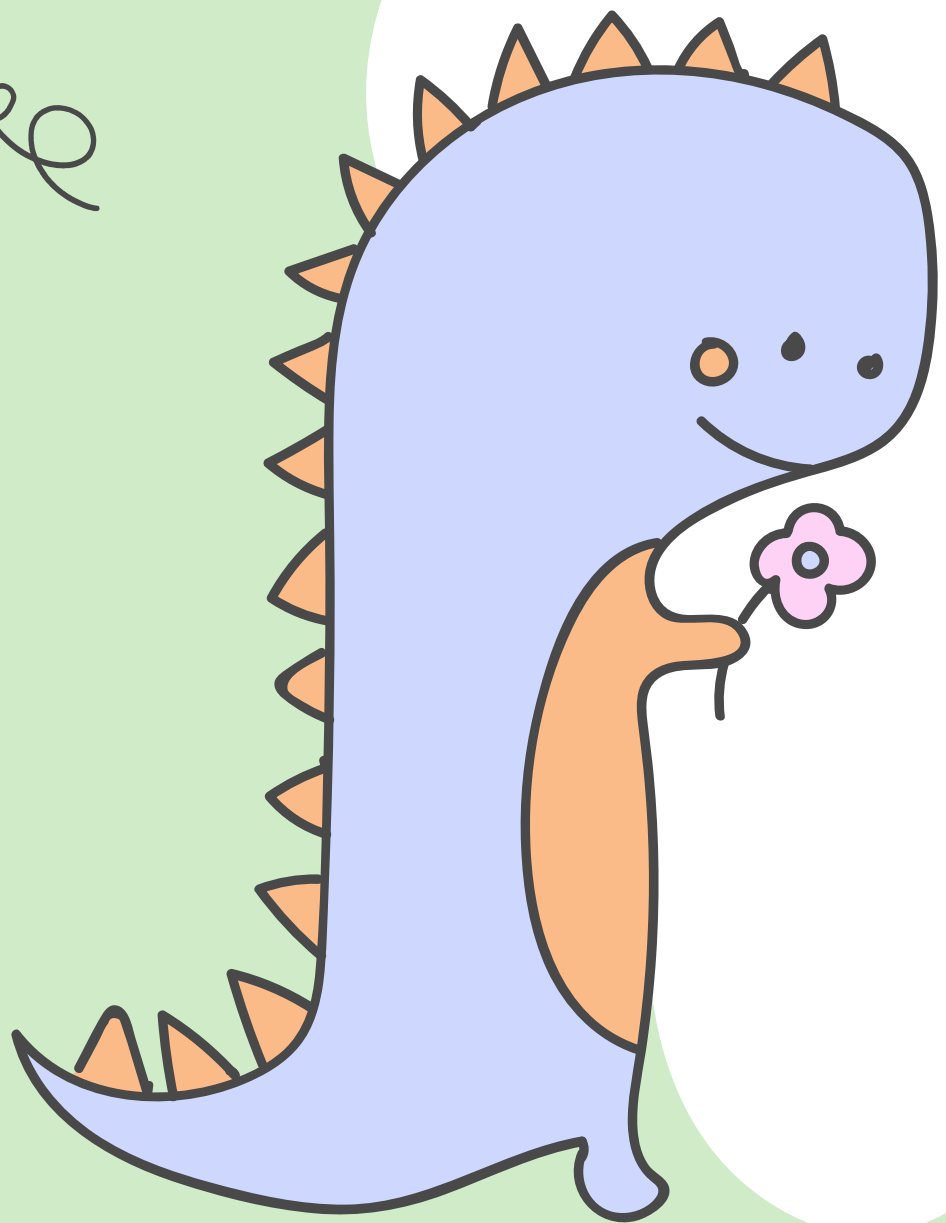
a police officer

a policeman

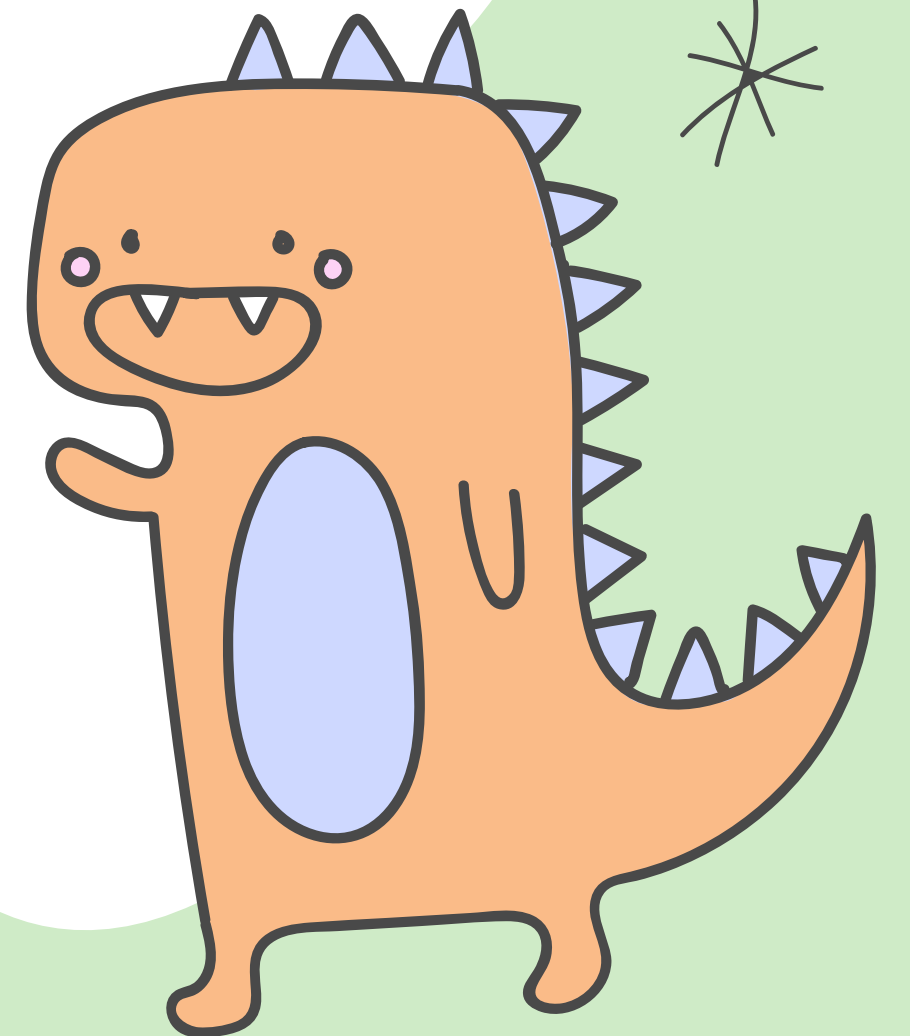


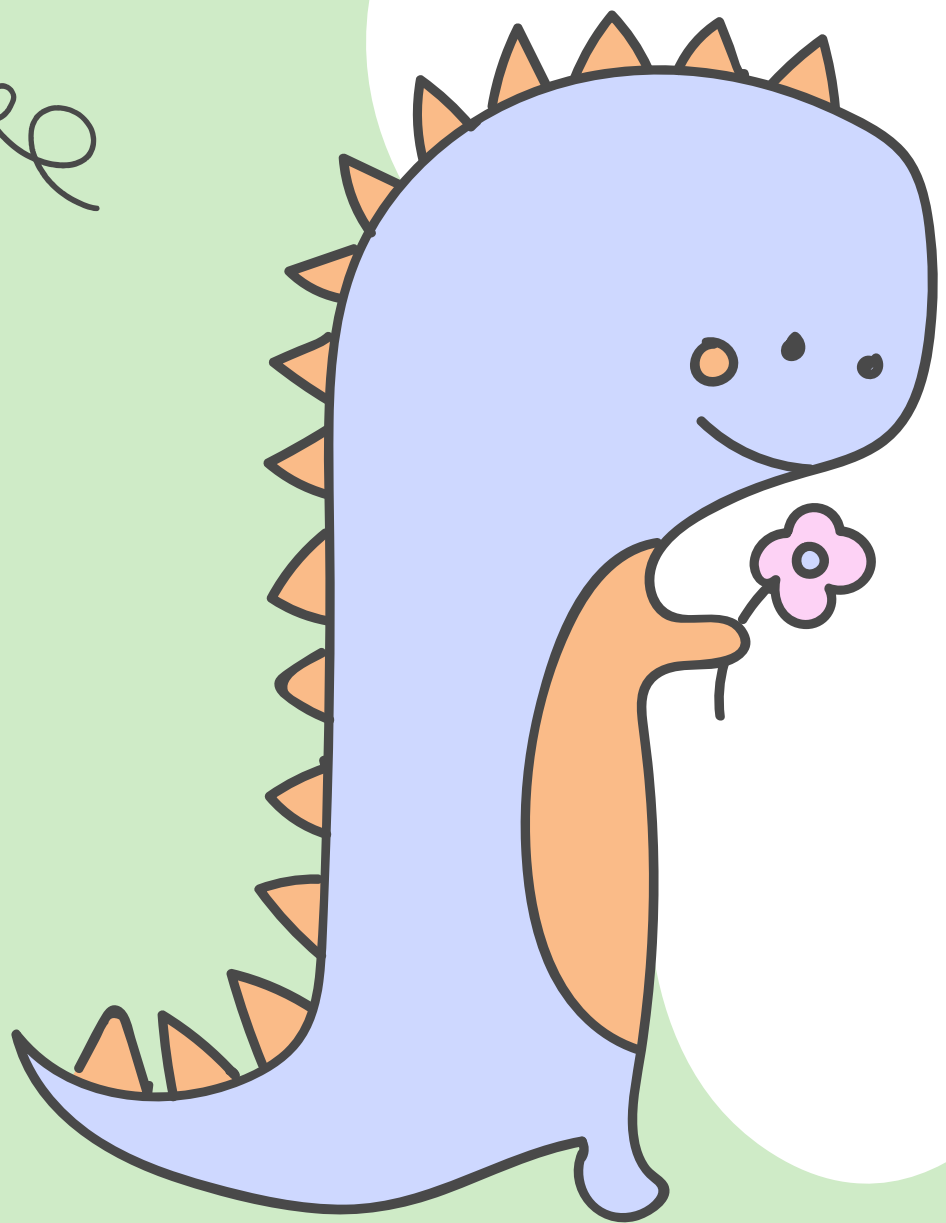


a postman

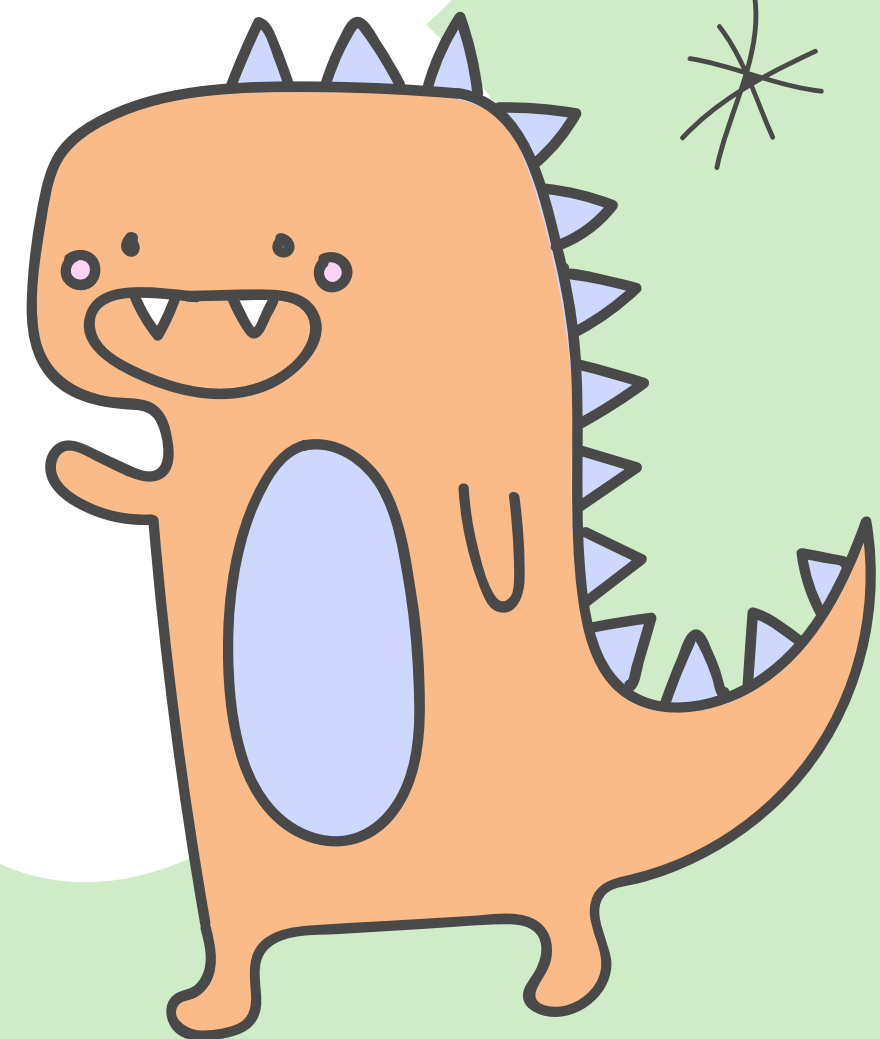


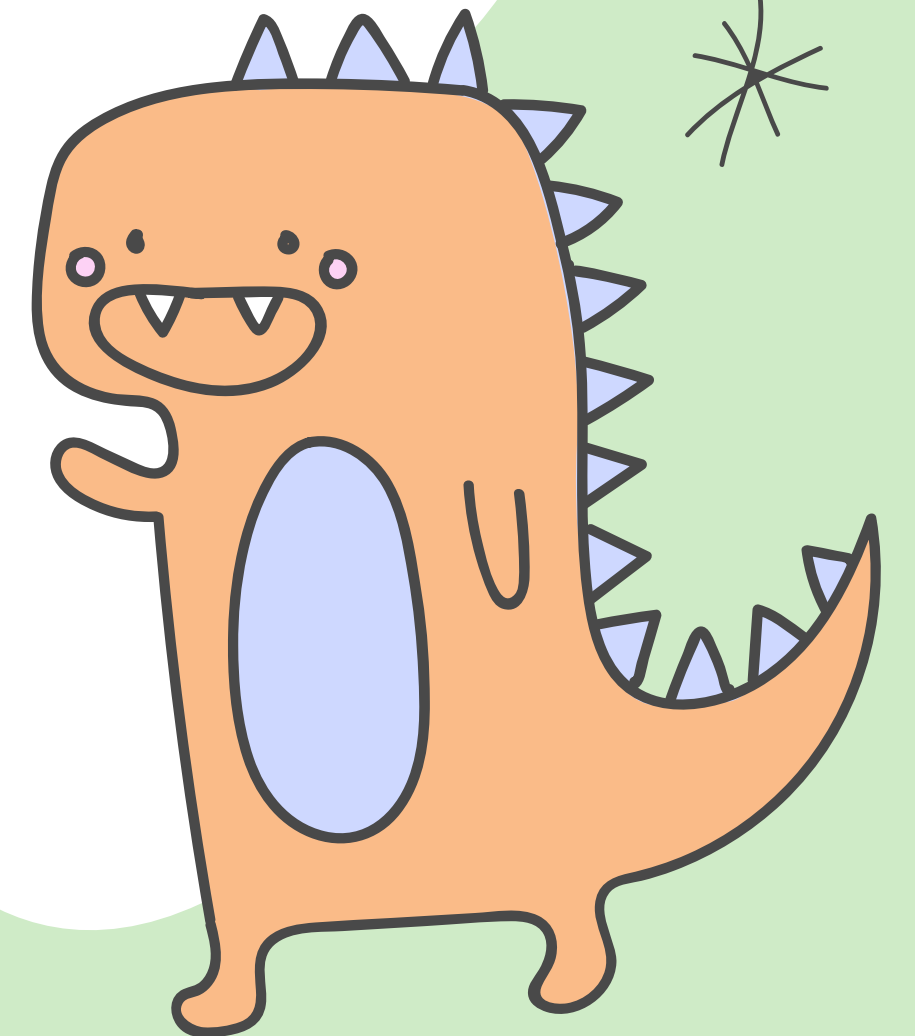
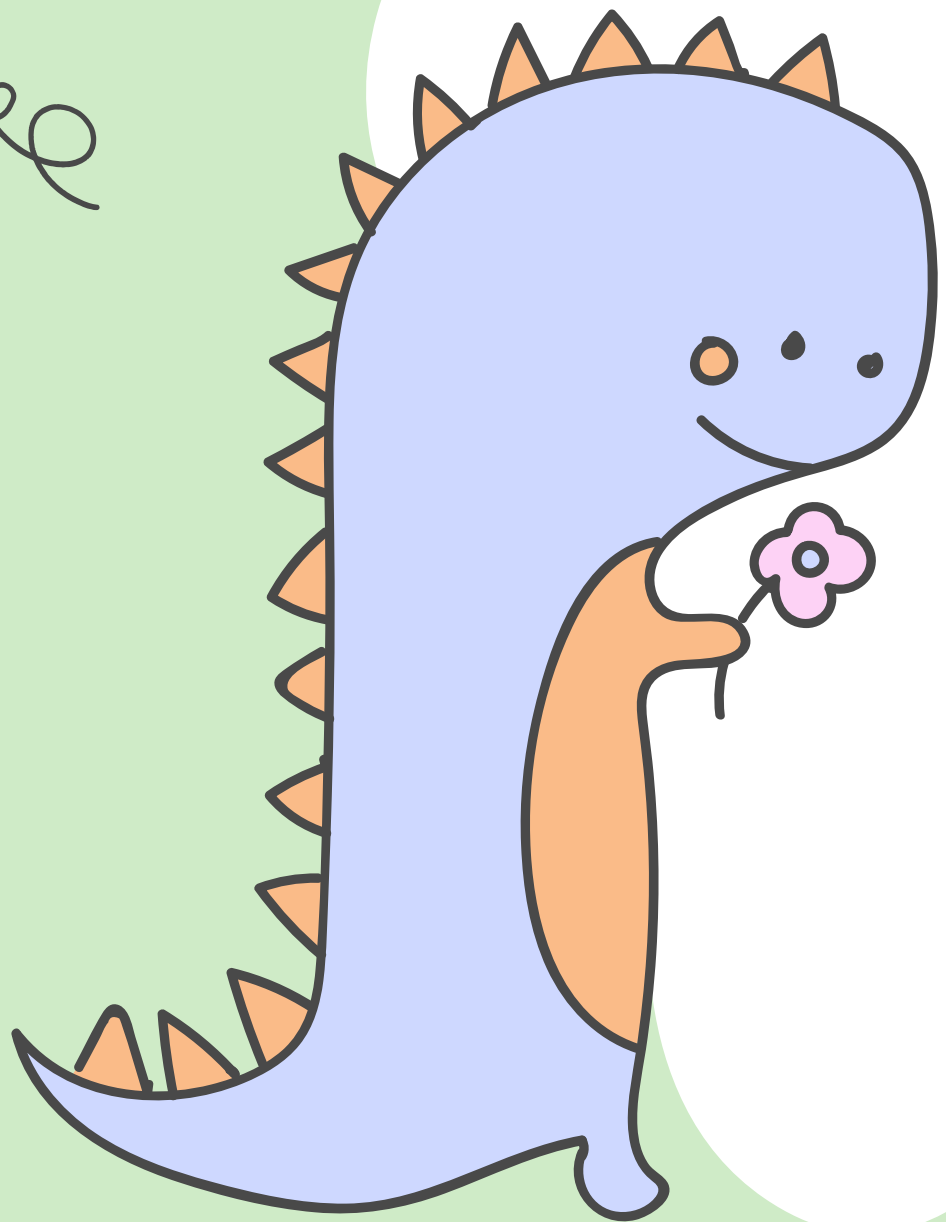
a student



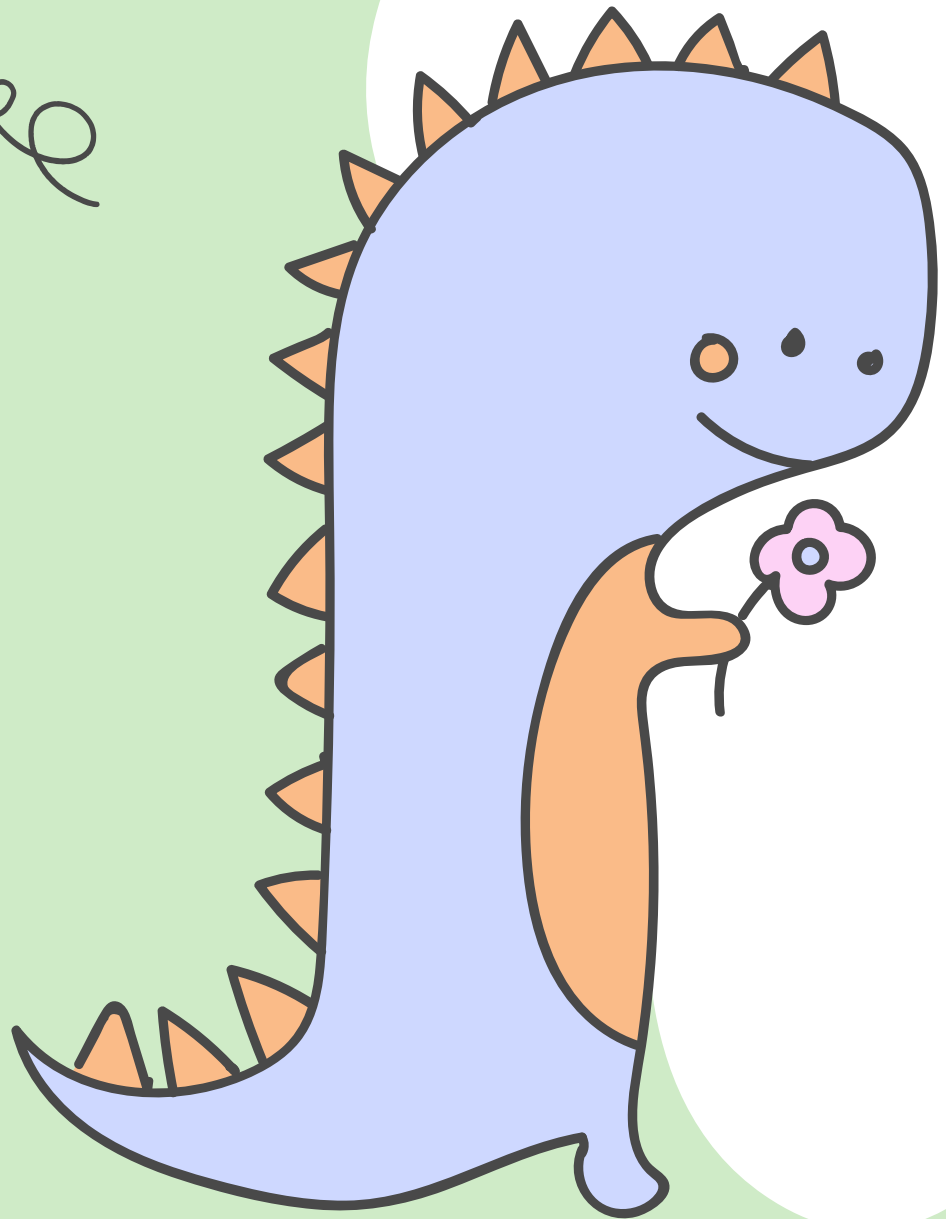


a fisherman

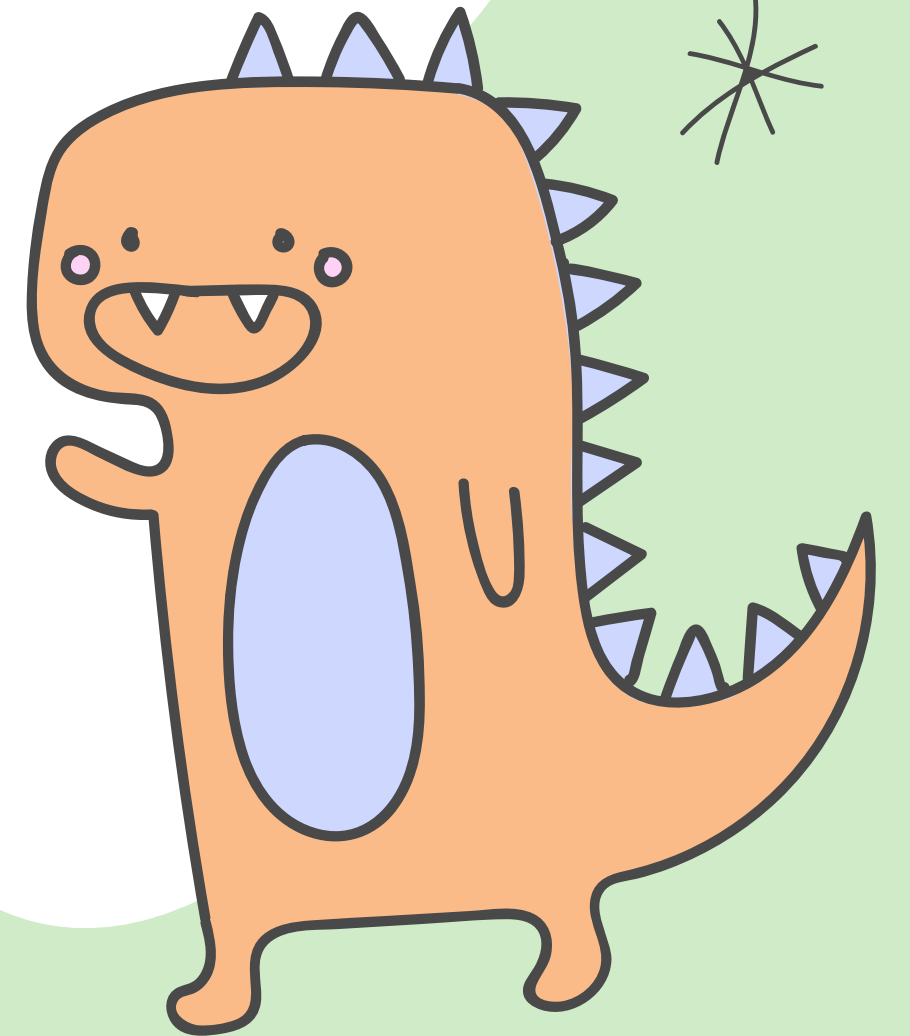


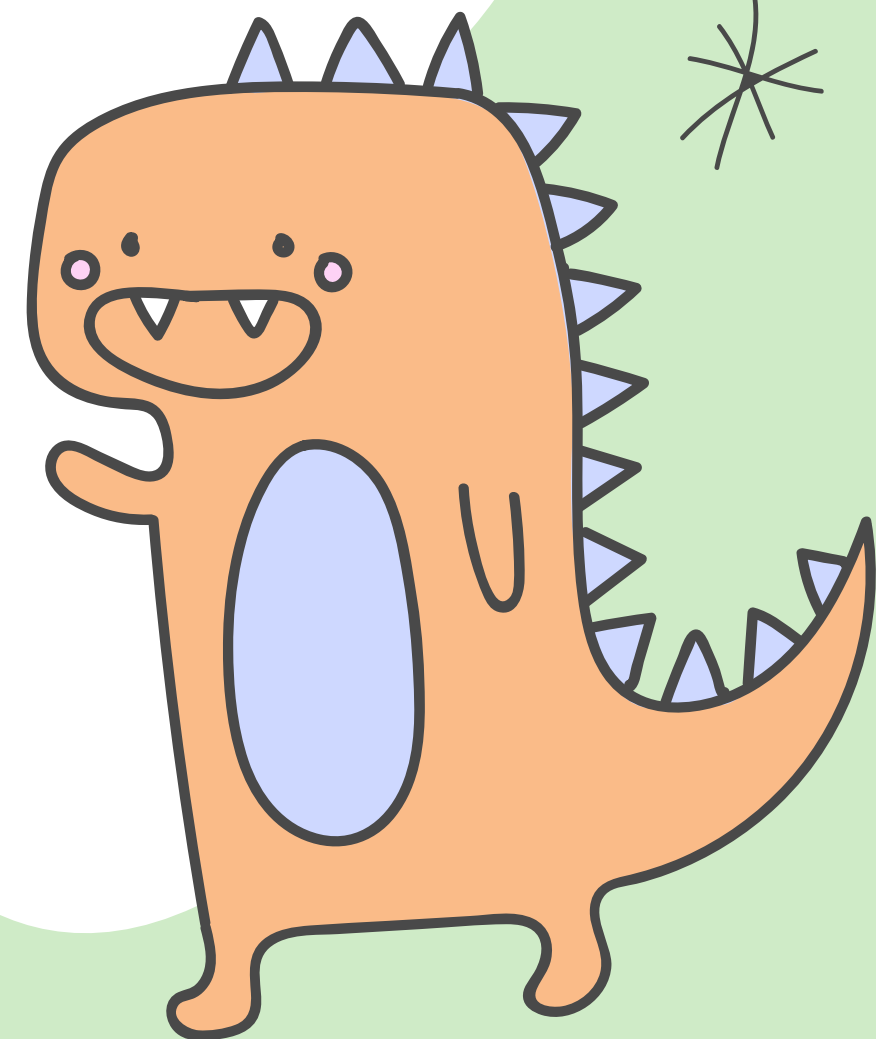
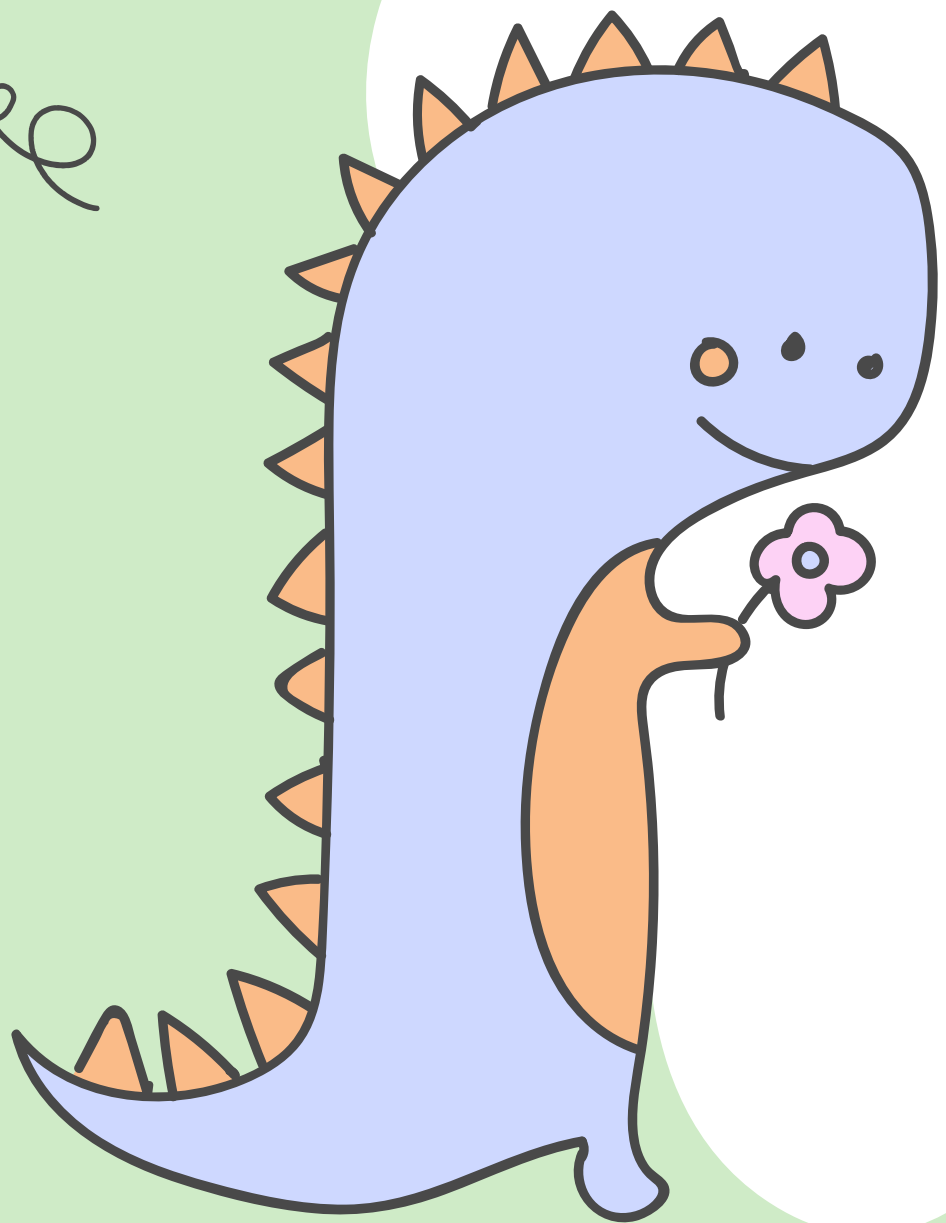


a florist



a barber





a secretary



Workplaces





school



hospital



post office

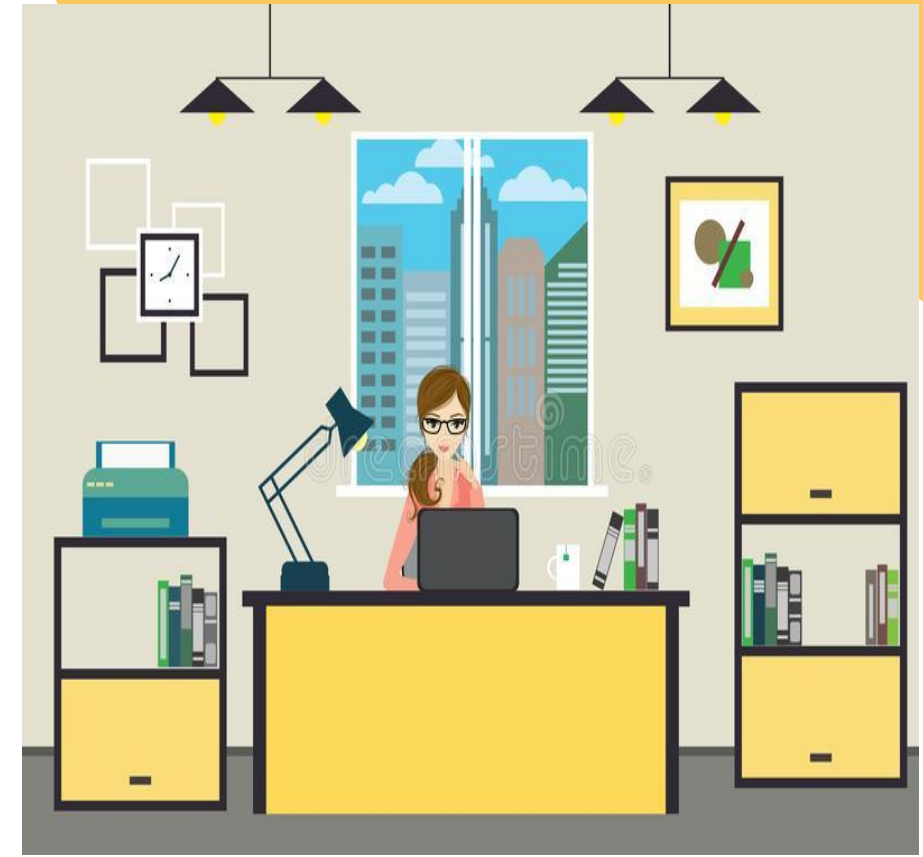




fire station



restaurant



office





flower shop



bakery



farm





police station



barber shop



What do **you** do?

I am a taxi driver.



Where do **you** work?

I work in a car.



What do **you** do?

I am a nurse.



Where do **you** work?

I work in a hospital.



What do **you** do?

I am a cook.



Where do **you** work?

I work in a restaurant.



What do **you** do?

I am a fire fighter.



Where do **you** work?

I work in a fire station.



What do **you** **do**?

I **am** a student.



Where do **you** **study**?

I **study** at Puttisophon school.





What does he do?

He is a postman.



Where does he work?

He works in a post office.





What does he do?
He is a baker.



Where does he work?
He works in a bakery.





What does he do?

He is a police officer.



Where does he work?

He works in a police station.





What does he do?

He is a barber.



Where does he work?

He works in a barber shop.





What does she do?
She is a doctor.



Where does she work?
She works in a hospital.



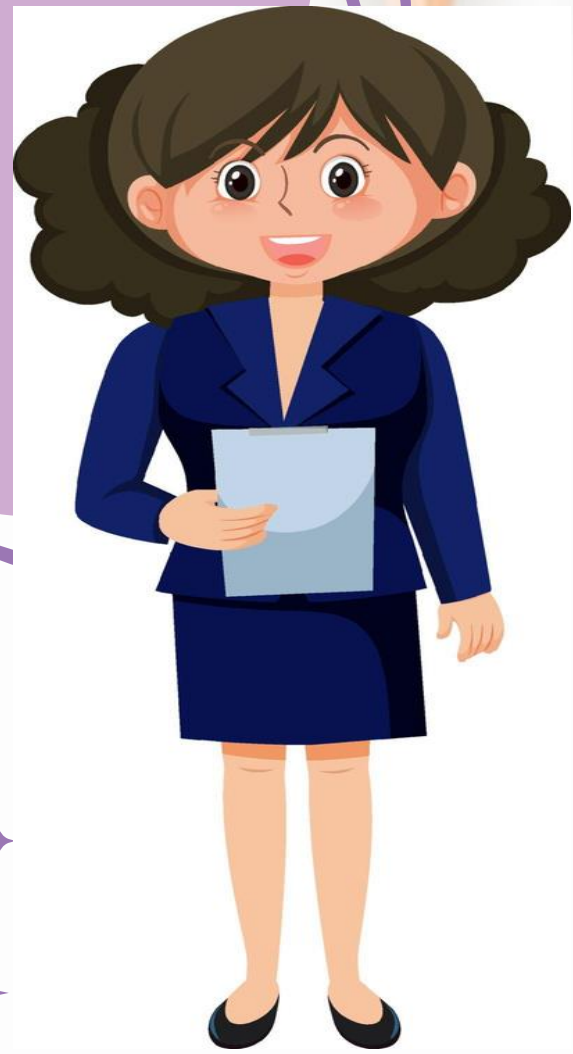


What does she do?
She is a florist.



Where does she work?
She works in a flower shop.





What does she do?
She is a secretary.



Where does she work?
She works in an office.





What does **your father** do?
He **is** a postman.



Where does **your father** work?
He **works** in a post office.





What does your mother do?
She is a nurse.



Where does your mother work?
She works in a hospital





What do they do?
They are teachers.



Where do they work?
They work in a school.



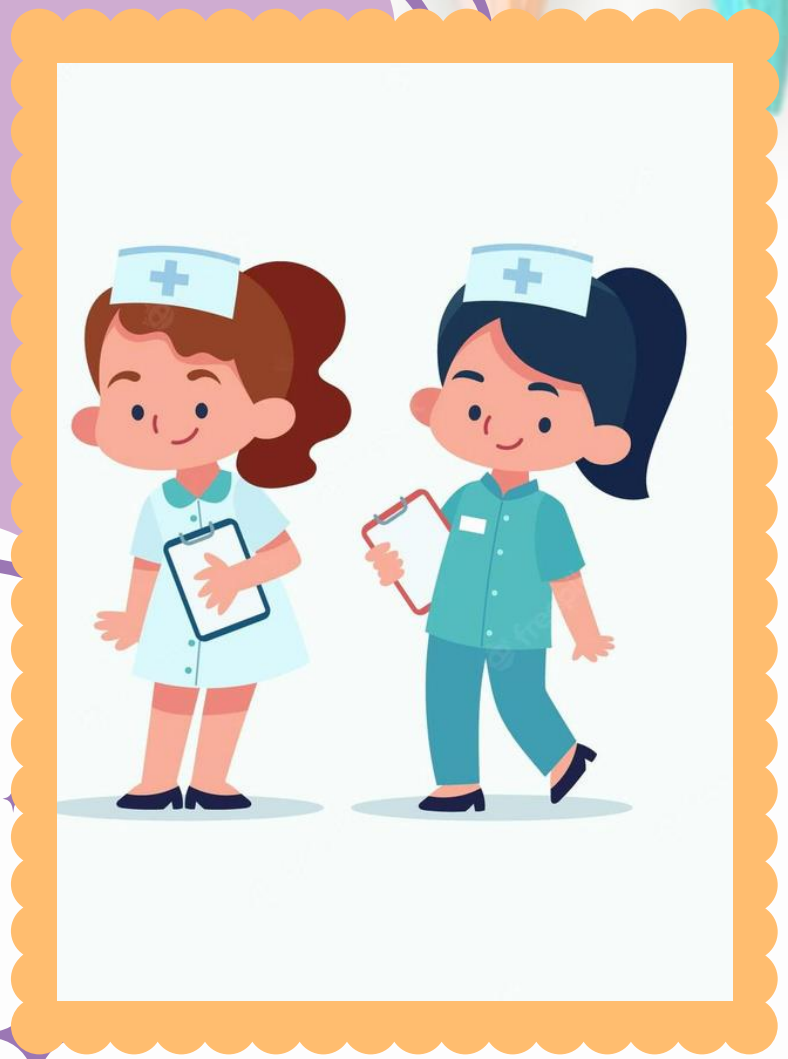


What do they do?
They are farmers.



Where do they work?
They work in a farm.





What do they do?
They are nurses.



Where do they work?
They work in a farm.





What do they do?
They are police officers.



Where do they work?
They work in a police station.



ประโยคคำถาม-คำตอบเกี่ยวกับอาชีพที่ประธานเป็น **you**

What do **you** do?

I am a/an อาชีพ

ประโยคคำถาม-คำตอบเกี่ยวกับสถานที่ประกอบอาชีพ
ที่ประธานเป็น **you**

Where do **you** work?

I work in a สถานที่ทำงาน



ประโยคคำถาม-คำตอบเกี่ยวกับอาชีพที่ประธานเป็น **he/she**

What	does	he	do?
		she	

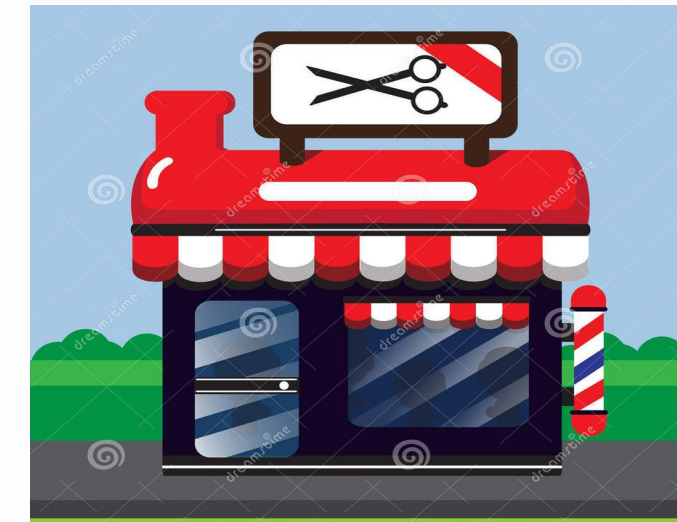


He	is	a/an	อาชีพ
She		a	nurse
		an	artist

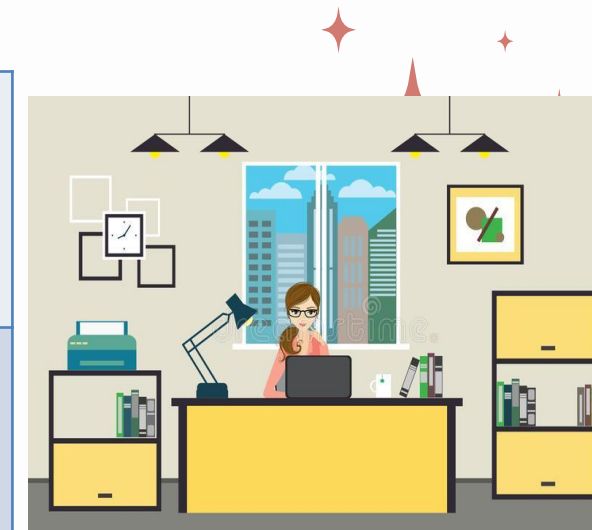


ประโยคคำถาม-คำตอบเกี่ยวกับสถานที่ที่ประกอบอาชีพ
ที่ประธานเป็น **he/she**

Where	does	he	work?
		she	



He	works	in a/an	สถานที่
She		a	barber shop
		an	office



ประโยคคำถาม-คำตอบเกี่ยวกับอาชีพที่ประธานเป็น **they**

What	do	they	do?
		Ann and Bam	



They	are	อาชีพ
		nurses
		artists

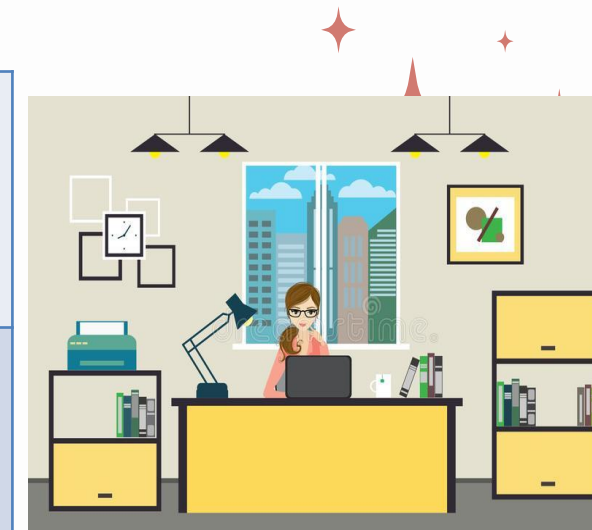


ประโยคคำถาม-คำตอบเกี่ยวกับสถานที่ที่ประกอบอาชีพ
ที่ประธานเป็น **he/she**

Where	do	they	work?
		Ann and Bem	



They	work	in a/an	สถานที่
		a	barber shop
		an	office



THANK
YOU! 😊

